

This Page Is Inserted by IFW Operations
and is not a part of the Official Record

BEST AVAILABLE IMAGES

Defective images within this document are accurate representations of the original documents submitted by the applicant.

Defects in the images may include (but are not limited to):

- BLACK BORDERS
- TEXT CUT OFF AT TOP, BOTTOM OR SIDES
- FADED TEXT
- ILLEGIBLE TEXT
- SKEWED/SLANTED IMAGES
- COLORED PHOTOS
- BLACK OR VERY BLACK AND WHITE DARK PHOTOS
- GRAY SCALE DOCUMENTS

IMAGES ARE BEST AVAILABLE COPY.

**As rescanning documents *will not* correct images,
please do not report the images to the
Image Problem Mailbox.**



PCT

WORLD INTELLECTUAL PROPERTY ORGANIZATION
International Bureau

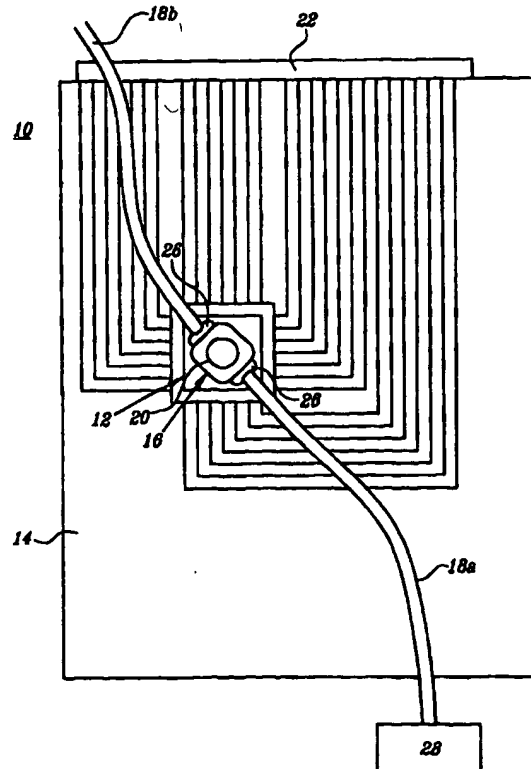
INTERNATIONAL APPLICATION PUBLISHED UNDER THE PATENT COOPERATION TREATY (PCT)

<p>(51) International Patent Classification ⁶ : B01J 19/00, B01L 3/00, B03C 5/02, G01N 33/53, C12Q 1/68, C12N 13/00</p>	<p>A1</p>	<p>(11) International Publication Number: WO 99/38612 (43) International Publication Date: 5 August 1999 (05.08.99)</p>
<p>(21) International Application Number: PCT/US99/01651 (22) International Filing Date: 26 January 1999 (26.01.99) (30) Priority Data: 09/016,596 30 January 1998 (30.01.98) US (71) Applicant: NANOGEN, INC. [US/US]; 10398 Pacific Center Court, San Diego, CA 92121 (US). (72) Inventors: CHENG, Jing; 10706 Caminito Alvarez, San Diego, CA 92126 (US). SHELDON, Edward, L., III; 12515 Birch Bluff Place, San Diego, CA 92131 (US). WU, Lei; 14021 Capewood Lane, San Diego, CA 92128 (US). O'CONNELL, James, P.; 682 Hoska Drive, Del Mar, CA 92014 (US). (74) Agents: FREEMAN, Corrine, M. et al.; Lyon & Lyon LLP, Suite 4700, 633 West Fifth Street, Los Angeles, CA 90071-2066 (US).</p>	<p>(81) Designated States: AU, BR, CA, CN, JP, KR, NZ, European patent (AT, BE, CH, CY, DE, DK, ES, FI, FR, GB, GR, IE, IT, LU, MC, NL, PT, SE). Published With international search report.</p>	

(54) Title: CHANNEL-LESS SEPARATION OF BIOPARTICLES ON A BIOELECTRONIC CHIP BY DIELECTROPHORESIS

(57) Abstract

The present invention comprises devices and methods for performing channel-less separation of cell particles by dielectrophoresis, DC high voltage-pulsed electronic lysis of separated cells, separation of desired components from crude mixtures such as cell lysates, and/or enzymatic reaction of such lysates, all of which can be conducted on a single bioelectronic chip. A preferred embodiment of the present invention comprises a cartridge (10) including a microfabricated silicon chip (12) on a printed circuit board (14) and a flow cell (16) mounted to the chip (12) to form a flow chamber. The cartridge (10) also includes output pins (22) for electronically connecting the cartridge (10) to an electronic controller. The chip (12) includes a plurality of circular microelectrodes (24) which are preferably coated with a protective permeation layer which prevents direct contact between any electrode and a sample introduced into the flow chamber. The permeation layer also helps to reduce cell adhesion at field minima, and enables immobilization of specific antibodies for specific cell capture. Specific cells from various cell mixtures were separated, lysed, and enzymatically digested on the chip.



FOR THE PURPOSES OF INFORMATION ONLY

Codes used to identify States party to the PCT on the front pages of pamphlets publishing international applications under the PCT.

AL	Albania	ES	Spain	LS	Lesotho	SI	Slovenia
AM	Armenia	FI	Finland	LT	Lithuania	SK	Slovakia
AT	Austria	FR	France	LU	Luxembourg	SN	Senegal
AU	Australia	GA	Gabon	LV	Latvia	SZ	Swaziland
AZ	Azerbaijan	GB	United Kingdom	MC	Monaco	TD	Chad
BA	Bosnia and Herzegovina	GE	Georgia	MD	Republic of Moldova	TG	Togo
BB	Barbados	GH	Ghana	MG	Madagascar	TJ	Tajikistan
BE	Belgium	GN	Guinea	MK	The former Yugoslav Republic of Macedonia	TM	Turkmenistan
BF	Burkina Faso	GR	Greece	ML	Mali	TR	Turkey
BG	Bulgaria	HU	Hungary	MN	Mongolia	TT	Trinidad and Tobago
BJ	Benin	IE	Ireland	MR	Mauritania	UA	Ukraine
BR	Brazil	IL	Israel	MW	Malawi	UG	Uganda
BY	Belarus	IS	Iceland	MX	Mexico	US	United States of America
CA	Canada	IT	Italy	NE	Niger	UZ	Uzbekistan
CF	Central African Republic	JP	Japan	NL	Netherlands	VN	Viet Nam
CG	Congo	KE	Kenya	NO	Norway	YU	Yugoslavia
CH	Switzerland	KG	Kyrgyzstan	NZ	New Zealand	ZW	Zimbabwe
CI	Côte d'Ivoire	KP	Democratic People's Republic of Korea	PL	Poland		
CM	Cameroon	KR	Republic of Korea	PT	Portugal		
CN	China	KZ	Kazakstan	RO	Romania		
CU	Cuba	LC	Saint Lucia	RU	Russian Federation		
CZ	Czech Republic	LI	Liechtenstein	SD	Sudan		
DE	Germany	LK	Sri Lanka	SE	Sweden		
DK	Denmark	LR	Liberia	SG	Singapore		
EE	Estonia						

DESCRIPTIONCHANNEL-LESS SEPARATION OF BIOPARTICLES ON A BIOELECTRONIC CHIP
BY DIELECTROPHORESIS

5

Related Application(s) Statement

This is a continuation-in-part of co-pending application serial number 08/709,353, filed on September 6, 1996, the specification of which is hereby incorporated by reference as if fully set forth herein.

10

Federal Funds Statement

This invention was reduced to practice with government support under contract 95-08-009 awarded to Nanogen, Inc. by the U.S. Department of Commerce under the Advanced Technology Program.

15

Field Of The Invention

This invention relates to devices and methods for performing active, multi-step molecular and biological sample preparation and diagnostic analyses. It relates generally to devices and methods for electronic cell separation, cell lysis, and/or enzymatic reaction; and more specifically, to devices and methods for achieving channel-less separation of cell particles by dielectrophoresis, DC high-voltage-pulsed electronic lysis of separated cells, and/or enzymatic reaction, all of which can be conducted on a single bioelectronic chip (e.g. in an integrated assay system). These manipulations are useful in a variety of applications, including, for example, food and/or water quality monitoring, infectious disease diagnostics, diagnostics of cancers, bone marrow processing (e.g. stem cell separation and analysis) and genetics-based identification of individuals for forensics purposes. In addition, these processes and devices can be used in gene expression studies particularly in which a small number of cells of a specific type are to be separated from a large number of other cells for the purpose of studying the RNA of the specific subpopulation.

30

BACKGROUND OF THE INVENTION

The basis for many molecular-biological and immuno assays, diagnostic assays and tests, among other things, include the steps of obtaining a cellular sample (e.g., blood, tissue,

etc.), separating out the cellular material of interest, disrupting or lysing the cells of interest to release the crude DNA and RNA (for simplicity, a reference to DNA in the following text also refers to RNA where appropriate) all protein, purifying the crude lysate (i.e. removing cellular debris), and performing some enzymatic reaction to analyze the lysate as desired.

5 Dielectrophoresis has become a popular technique for separating microparticles which are either charged or uncharged in solution. Techniques reported prior to this invention are almost always performed in a glass slide based device having exposed (i.e. naked) interdigitated electrodes plated on the surface of the slide and having a flow chamber with a volume of several hundred microliters. Cells are separated in such devices based on
10 their dielectric properties by choosing separation buffer(s) with appropriate conductivity and an AC signal with a suitable amplitude and frequency. These prior devices have several problems, including the following. A first problem is that both separated and unseparated cells bind nonspecifically to the exposed glass surface of the slide and to the exposed electrode surfaces. A second problem is that the volume of the flow chamber (several
15 hundred microliters) is so large that thermal convection disturbs and pushes off cells initially retained by the electrodes. A third problem is that washing off any undesired cells is not easily accomplished without disturbing the cells that are desirably retained on the electrodes, as the desired cells and electrodes stand in the way of fluidic flow and, hence, block the wash flow containing any undesired cells.

20 Disrupting or lysing cells releases the crude DNA and RNA material along with other cellular constituents. Electronic cell lysing techniques reported prior to this invention are conventionally performed by applying a series of high voltage DC pulses in a macrodevice, as opposed to a microchip-based device. These conventional electronic lysis techniques have several problems, including the following. A first problem is that the
25 electronic lysis conditions specified by commercial macro-device do not release DNA molecules of high molecular weight (larger than 20 Kb) because the high molecular weight DNA molecules do not fit through the pores created in the cell membrane by the prior lysing methods. A second problem is that some nucleic acids originally released in the lysis chamber are lost due to their non-specific binding to the surface of the lysis chamber. A
30 third problem is that the conventional electronic lysis macrodevice works as a stand alone unit such that both dielectrophoretic cell separation and electronic lysis cannot be performed on the same module.

The crude lysate is then purified (i.e., undesired cellular debris is washed off or

separated), and then the purified lysate is subjected to enzymatic reaction(s) to prepare the lysate for hybridization, detection, and analysis. Such reactions may include, for example, denaturing, cleaving, or amplifying the lysate. Only after these sample preparation and DNA processing steps, the actual hybridization reaction is performed, and, finally, detection and data reduction convert the hybridization event into an analytical result. These conventional preparation and processing techniques have several problems, including the following. A first problem is that the steps of sample preparation and processing are typically performed separately and apart from the other main steps of hybridization, detection and analysis. In addition, most of these techniques involve carrying out numerous operations (e.g., pipetting, centrifugations, electrophoresis) on a large number of samples. They are often complex and time consuming, and generally require a high degree of skill. Many a technique is limited in its application by a lack of sensitivity, specificity, or reproducibility. For example, these problems have limited many diagnostic applications of nucleic acid hybridization analysis.

Attempts have been made to use dielectrophoresis to separate and identify cells. For example, U.S. Patent No. 4,326,934 to Herbert discloses a method and apparatus for cell classification by continuous dielectrophoresis. Cells were separated by making use of both the positive and negative dielectrophoretic movement of cell particles. Separated cells were allowed to be characterized and/or classified by viewing the characteristic deflection distance of cells moving through the two electrodes.

Also, U.S. Patent No. 5,344,535 to Walter et al. discloses a method and apparatus for the characterization of micro-organisms and other particles by dielectrophoresis. Cells were characterized by matching their signature dielectrophoretic collection rates.

And U.S. Patent No. 5,569,367 to Walter et al. discloses a method and apparatus for separating a mixture using a pair of interdigitated electrodes. The apparatus used two energized interdigitated electrodes that obstruct straight through flow of cells and further separate different types of cells into fractions by applying a non-uniform alternating field. The electrode structure is comprised of interleaved grid-like structures aligned to obstruct flow through the structure.

In addition, attempts have been made to combine certain processing steps or substeps together. For example, various microrobotic systems have been proposed for preparing arrays of DNA probes on a support material. For example, Beattie et al., in The 1992 San Diego Conference: Genetic Recognition, November, 1992, used a microrobotic system to deposit micro-droplets containing specific DNA sequences into individual microfabricated

sample wells on a glass substrate. Various attempts have been made to describe integrated systems formed on a single chip or substrate, wherein multiple steps of an overall sample preparation and diagnostic system would be included. For example, A. Manz *et al.*, in "Miniaturized Total Chemical Analysis System: A Novel Concept For Chemical Sensing", *Sensors And Actuators*, B1(1990), pp. 244-248, describe a 'total chemical analysis system' (TAS) which comprises a modular construction of a miniaturized TAS. Sampling, sample transport, any necessary chemical reactions, chromatographic separations as well as detection were to be automatically carried out. Yet another proposed integrated system is Stapleton, U.S. Patent No. 5,451,500, which describes a system for automated detection of target nucleic acid sequences in which multiple biological samples are individually incorporated into matrices containing carriers in a two-dimensional format. Different types of carriers are described for different kinds of diagnostic tests or test panels.

Various multiple electrode systems are disclosed which purport to perform multiple aspects of biological sample preparation or analysis. Pace, U.S. Patent 4,908,112, entitled "Silicon Semiconductor Wafer for Analyzing Micronic Biological Samples" describes an analytical separation device in which a capillary-sized conduit is formed by a channel in a semiconductor device, wherein electrodes are positioned in the channel to activate motion of liquids through the conduit. Pace states that the dimension transverse to the conduit is less than 100 μm . Pace also states that all functions of an analytical instrument may be integrated within a single silicon wafer: sample injection, reagent introduction, purification, detection, signal conditioning circuitry, logic and on-board intelligence. Soane *et al.*, in U.S. Patent 5,126,022, entitled "Method and Device for Moving Molecules by the Application of a Plurality of Electrical Fields", describes a system by which materials are moved through trenches by application of electric potentials to electrodes in which selected components may be guided to various trenches filled with antigen-antibodies reactive with given charged particles being moved in the medium or moved into contact with complementary components, dyes, fluorescent tags, radiolabels, enzyme-specific tags or other types of chemicals for any number of purposes such as various transformations which are either physical or chemical in nature. It is said that bacterial or mammalian cells, or viruses may be sorted by complicated trench networks by application of potentials to electrodes where movement through the trench network of the cells or viruses by application of the fields is based upon the size, charge or shape of the particular material being moved. Clark, U.S. Patent 5,194,133, entitled "Sensor Devices", discloses a sensor device for the analysis of a

sample fluid which includes a substrate in a surface of which is formed an elongate micro-machined channel containing a material, such as starch, agarose, alginate, carrageenan or polyacrylamide polymer gel, for causing separation of the sample fluid as the fluid passes along the channel. The biological material may comprise, for example, a binding protein, an antibody, a lectin, an enzyme, a sequence of enzymes, or a lipid.

Various devices for eluting DNA from various surfaces are known. Shukla U.S. Patent 5,340,449, entitled "Apparatus for Electroelution" describes a system and method for the elution of macromolecules such as proteins, DNA and RNA from solid phase matrix materials such as polyacrylamide, agarose and membranes such as PVDF in an electric field.

Materials are eluted from the solid phase into a volume defined in part by molecular weight cut-off membranes. Okano, U.S. Patent 5,434,049, entitled "Separation of Polynucleotides Using Supports Having a Plurality of Electrode-Containing Cells" discloses a method for detecting a plurality of target polynucleotides in a sample, the method including the step of applying a potential to individual chambers so as to serve as electrodes to elute captured target polynucleotides, the eluted material is then available for collection.

Generally, the prior art processes have been extremely labor and time intensive. Multiple steps requiring human intervention either during the process or between processes are suboptimal in that there is a possibility of contamination and operator error. Further, the use of multiple machines or complicated robotic systems for performing the individual processes is often prohibitive except for the largest laboratories, both in terms of the expense and physical space requirements.

As is apparent from the preceding discussion, numerous attempts have been made to provide effective techniques to conduct sample separation and preparation reactions. However, for the reasons stated above, these techniques are limited and lacking. These various approaches are not easily combined to form a system which can carry out a complete DNA diagnostic assay. Despite the long-recognized need for such a system, no satisfactory solution has been proposed previously.

There is a continuing need for methods and devices which lead to improved dielectrophoretic separation of biological cells as well as improved biological stability of the separated cells. There is also a continuing need for methods and devices which improve cell preparation and analysis, and which are capable of integrating cell separation, preparation, and analysis in a single system.

Summary Of The Invention

This invention broadly relates to devices and methods for performing electronic molecular biological sample separation, lysis, and diagnostic analyses. It relates, more specifically, to devices and methods for achieving channel-less separation of cell particles by dielectrophoresis, DC high voltage-pulsed electronic lysis of separated cells, sample purification (i.e., separation of desired components from crude mixtures such as cell lysates), and/or enzymatic reaction(s), all of which can be conducted on a single bioelectronic chip utilizing the differential mobility and/or differential affinity for various materials in the sample.

10 In one aspect of this invention, a device comprises a microfabricated silicon chip with a plurality of coated electrodes. The electrodes are preferably coated with a protective layer which prevents direct contact between any electrode and a sample. A covered flow cell is attached to the chip to form a sealed chamber having an in-port and an out-port which may be further attached to plastic tubing to enable input and output of materials through the in-
15 port and out-port respectively.

One exemplary method of using such a device includes preparation of a cell sample for introduction (e.g., suspension in a cell separation buffer) and subsequent dielectrophoresis; introduction of the sample into the flow cell (e.g., via pumping); subjecting the sample to an electric field to dielectrophoretically separate the desired cells
20 from the sample; washing the undesired cells away by pumping solution through the flow cell; and subjecting the remaining (desired) cells to at least one series of electronic pulses to lyse the cells; and/or subjecting the lysate to enzymatic reaction(s) as desired.

Therefore, a primary object of the present invention is to provide devices and methods for conducting cell separation, lysis and/or enzymatic reaction.

25 An additional object of the present invention is to provide devices and methods for conducting cell separation, lysis, and/or enzymatic reaction(s) on a single chip so that mechanical manipulation such as pipetting and centrifugation can be omitted.

A further object of the present invention is to provide devices and methods for providing a combination of electrode addressing, a buffer, and the use of a permeation layer
30 to accomplish uniform separation of desired cells.

Still a further object of the present invention is to provide devices and methods for providing uniform separation of desired cells with minimized non-specific adhesion of cells to the flow chamber and/or electrodes through the use of a permeation layer.

Yet a further object of the present invention is to provide devices and methods where washing off undesired cells is easily accomplished through washing without channels in the flow chamber.

Another object of the present invention is to lyse the desired cells retained on the electrodes by applying at least one series of high-voltage DC pulses on the electrodes in a highly localized and controlled manner so that both DNA and RNA or protein are released from the cells with their integrity intact.

Still another object of the present invention is to perform in the same flow chamber an enzymatic reaction on the lysate to free the nucleic acids from contaminating proteins, while not causing any loss of DNA or RNA.

Yet another object of the invention is to perform one or more of the above operations, i.e., cell separation, cell lysis, enzymatic deproteinization of DNA/RNA, or nuclease digestion of DNA/RNA, as well as DNA or RNA hybridization, immuno assay, or ligand binding reaction, in a self-contained flow chamber on a single chip.

15

Brief Description Of The Drawings

Figure 1 shows a top view of a device of the present invention bearing a microchip and a flow chamber including fluid tubing and a detection window.

Figure 2 is the schematic view of a chip coated with a permeation layer showing several circular electrodes and counterelectrodes.

Figure 3A is a schematic illustration of checkerboard style electronic addressing of a five by five arrangement of circular electrodes where each electrode has opposite biasing as its nearest neighboring electrodes (the use of a five by five arrangement is for illustrative purposes only, the array can have more or less than twenty five electrodes).

Figure 3B is a schematic illustration of a computer model of the AC field distribution corresponding to the checkerboard style addressing shown in Figure 3A where a regular distribution of electric field is obtained with the field maxima at each electrode and field minima in the areas between the electrodes.

Figure 3C is a schematic illustration of square wall style electronic addressing of a five by five arrangement of circular electrodes where electrodes on the same square frame have the same biasing which is opposite from those electrodes on the nearest neighboring square frame(s).

Figure 3D is a schematic illustration of a computer model of the AC field distribution

corresponding to the square wall style addressing shown in Figure 3C.

Figure 4A shows a detailed view of a chip.

Figure 4B shows a sample of *E. coli* cells retained on several electrodes of the chip shown in Figure 4A, and separated from human blood cells (both red and white blood cells) using the checkerboard style electronic addressing shown in Figures 3A and 3B.

Figure 5 shows the retained *E. coli* cells of Figure 4B after the human blood cells are washed away.

Figure 6 shows a sample of the nucleic acids released from the *E. coli* cells shown in Figures 4B and 5 and concentrated by applying a DC wave.

Figure 7 shows a photographic image taken after analysis by agarose gel electrophoresis of the nucleic acids of Figure 6 demonstrating that a whole spectrum of nucleic acids ranging from genomic DNA, supercoiled plasmid DNA and RNAs were released from the cells after electronic lysis.

Figure 8A shows a hybridization control to show specific capture by electronically-enhanced hybridization of plasmid DNA released from *E. coli*.

Figure 8B shows the hybridization control of Figure 8A and the results after a sandwich assay in which a sample of plasmid DNA from *E. coli* is electronically hybridized to additional probes.

Figure 9A shows a hybridization control to show specific capture by electronically-enhanced hybridization of ribosomal RNA released from *E. coli*.

Figure 9B shows the hybridization control of Figure 9A and the results after a sandwich assay in which ribosomal 16S RNA from *E. coli* is electronically hybridized to additional probes.

Figure 10A is a view of the surface of a chip of the present invention after washing.

Figure 10B shows a sample of HeLa cells retained on electrodes of the chip shown in Figure 10A, and separated from human blood cells (both red and white blood cells) using the checkerboard style electronic addressing shown in Figures 3A and 3B.

Figure 10C shows the sample of HeLa cells of Figure 10B after the human blood cells are washed away.

Figure 10D shows the sample of HeLa cells of Figures 10B and 10C after staining.

Figures 11A and 11B are cut-away schematic views of a self-contained flow chamber designed for performing cell separation, cell lysis, enzymatic deproteinization process of DNA/RNA, and/or DNA or RNA hybridization.

Figures 12A-D are, respectively, schematic views of four different microchip designs.

Detailed Description of the Preferred Embodiment

5 The present invention comprises devices and methods performing channel-less separation of cell particles by dielectrophoresis, DC high voltage-pulsed electronic lysis of separated cells, separation of desired components from crude mixtures such as cell lysates, and/or enzymatic reaction of such lysates, all of which can be conducted on a single bioelectronic chip.

10 A preferred embodiment of the present invention comprises a cartridge 10, shown in Figure 1, including a microfabricated silicon chip 12 on a printed circuit board 14, a flow cell 16 mounted to the chip 12 to form a flow chamber including fluid tubing 18a and 18b and a detection window 20. The flow chamber preferably has a volume of about 10 μ l. The cartridge 10 also includes output pins 22 for electronically connecting the cartridge 10 to an
15 electronic controller (e.g. instrument or computer) (not shown).

 The microfabricated chip 12 is shown in Figure 2 (a detail is shown in Figure 4A), and, as shown, includes a plurality of circular microelectrodes 24 and counterelectrodes 34. The electrodes 24 are preferably coated with a protective layer which prevents direct contact between any electrode and a sample introduced into the overlying flow cell 16 (explained in
20 more detail below).

 In a preferred embodiment, the chip 12 includes four counterelectrodes 34, and five rows each having five platinum microelectrodes 24, and is fabricated using standard semiconductor processing techniques that are well known. It should be noted that the number of electrodes could be more or less than that shown here, and that the present
25 specification uses a five by five arrangement for illustrative purposes only and is not limited to the same. Indeed, a chip with more electrodes could facilitate recovery of a greater number of the targeted cells and, therefore, a higher yield of nucleic acids. The center to center distance between neighboring electrodes 24 is preferably on the order of about 200 μ m and the diameter of each electrode 24 is preferably on the order of about 80 μ m.

30 In this embodiment, the chips 12 were prepared by first sputtering a titanium-tungsten (Ti-W) layer onto a thermally-oxidized silicon wafer to a thickness of about 100 nm, and then on the Ti-W layer sputtering a platinum layer to a thickness of about 300 nm. A photolithographically defined wet etch in aqua regia was used to pattern the metallization.

Thin films of low stress silicon nitride (1.3 μm) and silicon dioxide (100 nm) were deposited over the surface of the patterned metal by plasma-enhanced chemical vapor deposition. A photolithographically-patterned dry plasma etch was used to etch through the dielectric to the electrode arrays. The chips 12 were each wire-bonded to a printed circuit board 14
5 (which preferably conforms to the personal computer card standard of the Personal Computer Memory Card International Association).

After bonding the chips 12 to the circuit boards 14, the chips 12 were washed with isopropanol followed by rinses with deionized water. The chips 12 were then blown dry by a stream of nitrogen. The boards 14 bearing the dried chips 12 were then placed vertically in a
10 plasma cleaner boat and cleaned in argon (250 mTorr, 250 W) for five minutes. After the plasma cleaning, a permeation layer was added to each chip 12.

First, a 2.5% bottom permeation layer (BPL) solution of glyoxyl agarose was prepared as follows. Glyoxyl agarose (250 mg) (from Sigma, St. Louis, MO) was added to 10 ml of deionized distilled water, mixed, and then boiled for eight minutes. The completely
15 dissolved agarose solution was hot filtered into pre-warmed (65°C) Eppendorf tubes using a 1.2 μm syringe filter. The filtered agarose solution was equilibrated to 65°C for five minutes. Next, a top permeation layer (TPL) was prepared as follows. A streptavidin solution (5 mg/ml) was prepared by suspending streptavidin (Boehringer Mannheim, Indianapolis, IN) in a solution containing sodium chloride (250 mM) and sodium phosphate
20 (10 mM, pH 7.2). The streptavidin solution was combined with the temperature equilibrated BPL solution to yield 2% agarose and 1 mg/ml streptavidin. The warm BPL solution (50 μl) was placed on each chip and spun in a spincoating apparatus (EC101D, Headway Research, Garland, TX) at 2500 rpm for twenty seconds at room temperature. After the BPL was solidified, the warm TPL solution (50 μl) was placed on top of the BPL and spun in the spin-
25 coating apparatus at 10,000 rpm for twenty seconds at room temperature. The coated chips were then baked at 37°C for thirty minutes.

The Schiff base linkage between the glyoxyl agarose and the primary amines of streptavidin was reduced with freshly prepared sodium cyanoborohydride (0.2 M) / sodium borate (0.3 M), pH 9.0, at room temperature for one hour. Remaining aldehyde groups were
30 capped with glycine buffer (0.2 M) in sodium borate (0.3 M), pH 9.0, at room temperature for thirty minutes. The chips were finally rinsed with deionized water for five minutes, air dried for four hours, and then stored at 4°C.

A cartridge 10 of the present invention was completed by selecting a prepared chip

12 / printed circuit board 14 and gluing a polycarbonate molded flow cell 16 onto the chip 12 preferably using a UV adhesive (Norland 68, Thorlabs, New Brunswick, NJ) under a 200 W UV light for forty-five seconds (4 Joules/cm²). Preferably a cover glass slip is glued on top of the flow cell 16 to form a sealed flow chamber using the same procedure. Input and
5 output plastic tubing 18a and 18b, respectively, were added to the in-port and out-port of the flow cell 16 via lure fittings 26 and then glued in place.

The cartridge 10 was then ready for testing. A test was conducted to separate, lyse, and enzymatically react *E. coli* cells, and a test was conducted to separate cervical carcinoma cells.

10

The *E. coli* Test

First a cell culture was prepared using well known techniques. A 296 bp fragment was amplified from the SpaO region of *Salmonella enteritidis*, then cloned into plasmid pCR 2.1 (3890 bp) using an Invitrogen T/A Cloning Kit (Invitrogen, San Diego, CA). Ligation
15 was performed according to kit instructions, and the ligation product was used to transform INV α F' competent *E. coli*. Transformants were grown up on LB plates supplemented with ampicillin (100 μ g/ml), 80 μ l of α -gal (20 mg/ml), and 4 μ l of isopropylthio-B-D-galactoside (40 mM) for blue / white screening. To screen for clones ten white colonies were picked, and lysed to release DNA for analysis. The DNA was amplified by PCR using SpaO
20 specific primers and the amplicons were examined by gel electrophoresis. One positive clone from the PCR screen was grown up at 37°C overnight in LB and ampicillin liquid culture (100 μ g/ml) with shaking at 225 rpm.

Then a cell culture was prepared using well known techniques. A cell separation buffer comprising 0.05 \times TBE (4.5 μ M Tris, 4.5 μ M boric acid, 0.1 μ M EDTA, pH 8.2), 250
25 mM sucrose, pH 8.2, was prepared. The conductivity of the buffer was 114 μ S/cm measured by an Accumet pH Meter 50 (Fisher Scientific, Pittsburgh, PA). The conductivity under which cell separation was carried out was chosen carefully to ensure that the *E. coli* cells were subjected to positive dielectrophoresis and all normal human blood cells were subjected to negative dielectrophoresis. The cultured *E. coli* cell suspension (1 ml) was centrifuged at
30 325 \times g for four minutes and the supernatant removed. The cell pellet was washed in the cell separation buffer (1 ml) and pelleted using the same conditions described above. The cells were then re-suspended in cell separation buffer (1 ml). Fresh EDTA-anticoagulated human blood (20 μ l) was added to the *E. coli* cell suspension (1 ml), and the cell culture was

complete.

The cell culture was introduced into a cartridge 10 of the present invention and dielectrophoresis was conducted to separate out the *E. coli* cells. The cartridge 10 was placed on the stage of a Nikon phase contrast microscope. The lighting was provided by a ring light (Precision MicroOptics, Irvine, CA). Image signals were collected by a CCD/RGB color video camera (Sony DXC-151, Mikron Instruments, San Diego, CA) through a 10× objective, and were recorded using a Sony VCR and monitored by a Sony television monitor. Fluids were pumped through the tubing 18 and flow cell 16 via a peristaltic pump (Model RP-1, Rainin Instruments, Woburn, MA). The signals on electrodes 24 were generated from a function/arbitrary waveform generator (Model HP33120A, Hewlett-Packard, Santa Clara, CA) and monitored by an oscilloscope (Model HP54600, Hewlett-Packard).

Prior to actually subjecting the cell culture to dielectrophoresis, computer modeling and dielectric characterization studies were conducted. To facilitate washing off the human blood cells, it was preferred that the *E. coli* cells be subjected to positive dielectrophoresis and all normal human blood cells be subjected to negative dielectrophoresis. Under positive dielectrophoretic force *E. coli* migrates toward the electrode where the positive field maxima occurs. Under negative dielectrophoretic force human blood cells migrate toward the space between the electrodes where the negative field maxima occurs. The frequency at which this occurs was empirically determined based on computer modeling and dielectric characterization studies.

The basic theory of dielectrophoresis, motion of particles with induced polarization under non-uniform electric field, has been extensively studied. See, e.g., R. Pethig, "Dielectrophoresis: Using Inhomogeneous AC Electrical Fields To Separate and Manipulate Cells", Crit. Rev. Biotech., 16:331-48 (1996); X. Wang, et al., "A Unified Theory of Dielectrophoresis and Travelling Wave Dielectrophoresis", J. Phys. D: Appl. Phys., 27:1571-74 (1994); G. Fuhr, "Cell Manipulation and Cultivation Under AC Electric Field Influence in Highly Conductive Culture Media", Biochim. Biophys. Acta 1158:40-46 (1993); and M. Washizu, "Molecular Dielectrophoresis of Biopolymers", IEEE Trans. Industry Applicat. 30:835-43 (1994). The dielectrophoresis phenomenon can be generally described by energy potential

$$\psi = - \bar{m} \cdot \bar{E}$$

where \bar{m} is the induced dipole moment of a particle suspended in dielectric medium and \bar{E} is the applied electric field. Therefore, the dielectrophoretic force acting on a particle can be written as a gradient of energy potential.

When the particle has zero net charge and the surrounding medium is isotropic, the
5 average energy potential can be simplified as

$$\psi = -(1/2)p\nu E^2$$

where p is the effective polarizability of the suspended particle with volume ν . The value and sign of polarizability (p) depends on the permittivity of particle and medium, as well as the frequency of the applied electric field. R. Pethig, "Dielectrophoresis: Using
10 Inhomogeneous AC Electrical Fields To Separate And Manipulate Cells", Crit. Rev. Biotech., 16:331-48 (1996). At steady state, the particle with positive polarizability ($p > 0$) will tend to stay at the high-field region and the particle with negative polarizability ($p < 0$) will stay at the low-field region.

To model the distribution of the electric field around the electrodes 24 of the present
15 invention, the following two assumptions were made: First, within the low frequency range the dimensions of both chip and flow chamber are much smaller than the wavelength of the applied AC field. Second, the sample solution has electroneutrality. Under these two assumptions the electric field can be calculated for a particular addressing configuration in the present experiment set-up by solving Laplace's equation

$$20 \quad \nabla^2 \phi = 0 \text{ and } \bar{E} = -\nabla \phi$$

(ϕ is electric potential) with boundary conditions of fixed voltage on electrodes and zero normal current on the rest of the surface, $\phi = V_0$ at positive electrodes, $\phi = 0$ at negative electrodes, and $\delta\phi/\delta n = 0$ at the rest of the chip surface and the flow chamber.

The electric field in the sample solution, and, therefore, the energy potential of
25 polarized particles, is numerically calculated by the finite-difference method. See, K. Binns, "The Analytical and Numerical Solution of Electric and Magnetic Fields" (John Wiley & Sons, N.Y. 1992).

The frequency at which the *E. coli* cells were subject to the positive dielectrophoretic force and blood cells were subject to the negative dielectrophoretic force was empirically
30 determined by subjecting the cell mixture to different conditions. The investigation was conducted by gradually increasing the frequency of the sinusoidal signal (10 volts peak-to-peak) starting from 5 KHz. When the frequency reached 10 KHz, evident separation of *E.*

coli cells and the rest of the human blood cells was observed. These electrical parameters were later used for the isolation of the *E. coli* cells.

To perform the dielectrophoretic separation of *E. coli* cells from blood cells in the cell culture, an unused cartridge 10 was employed. The chip 12 of the cartridge 10 was first washed by pumping separation buffer from a sample/buffer reservoir 28 through the tubing 5 18 and flow cell 16. Next, the cell culture was pumped into the flow cell 16, and the pump was switched off. The entire array of electrodes 24 (i.e. all twenty five electrodes in the five column by five row array) were addressed in a checkerboard bias format providing field maxima at each electrode and field minima in the areas between the electrodes, as shown in 10 Figures 3A-3B, by applying a sinusoidal signal of 10 volts peak-to-peak at 10 KHz. As shown in Figure 4B (and compared to Figure 4A), the separation of *E. coli* cells 30 (collected at the electrodes 24 at the field maxima) from human blood cells 32 (collected in areas between the electrodes 24 at the field minima) was finished in approximately four minutes. Afterwards, the pump was switched on to start the washing process.

15 The checkerboard biasing format shown in Figure 3A was used rather than the square wall format shown in Figure 3C. As is shown in Figure 3B, the field distribution corresponding to the checkerboard style addressing provides a uniform distribution of the electric field with the field maxima at each electrode and field minima in the areas between the electrodes, whereas, as is shown in Figure 3D, the square wall style addressing does not 20 provide field minima interspersed between electrodes. Having an arrangement where the field minima are interspersed between electrodes (as shown in Figure 3B) is preferred because with such an arrangement washing off undesired cells (i.e. those collected in the areas of field minima) is easily accomplished without disturbing the desired cells (i.e. those retained on the electrodes), as the desired cells and electrodes do not stand in the way of 25 fluidic flow and, hence, do not block the washing off flow containing any undesired cells. It should be understood that the checkerboard style addressing could essentially be accomplished by grouping electrodes and having each group of electrodes biased opposite from its nearest neighboring groups of electrodes.

When the sample cell culture mixture was nearly drained from the sample/buffer 30 reservoir 28, separation buffer was added to wash the rest of the sample through the flow cell 16 while the AC signal was still on. As is shown in Figure 5 (as compared to Figure 4B), the washing process washed away the human blood cells and the *E. coli* cells 30 were retained. After washing, separation buffer (300 μ l) containing proteinase K (490 μ g, Boehringer

Mannheim, Indianapolis, IN) was pumped into the flow chamber 16 to reduce the size of proteins.

Electronic lysis was then performed to lyse the retained *E. coli* cells. To lyse the cells a series of pulses (500 V, 50 μ s pulse width) were applied between the four
5 counterelectrodes 34 (shown in Figure 2) and the twenty-five smaller cell collecting electrodes 24. The pulses were applied in such a way that the polarity of every twenty pulses were alternated between the two groups of electrodes 24 and 34. A total of four hundred pulses were applied for each lysis process. The alternating pulses pushed and pulled material out of the cells. Figure 6 shows a sample of the nucleic acids 36 released from the *E. coli*
10 cells and concentrated by applying a DC wave.

The lysate mixture was incubated at 50°C for twenty minutes to allow digestion of the DNA-contaminating proteins. The lysate was collected by pumping it out of the flow cell 16. The combination of dielectrophoretic separation and electronic lysis were repeated six times and all the lysates were pooled together for analysis.

The pooled lysate was centrifuged at 16000 \times g for five minutes. Next, the
15 supernatant was recovered and two volumes of chilled ethanol (-20°C) were added to the solution, mixed and spun at 16000 \times g for ten minutes. The supernatant was removed and the pellet was dried in air. The pellet was then redissolved in 0.05 \times TBE buffer (300 μ l). A fraction of the redissolved solution (30 μ l) was combined with a solution containing RNase
20 (3 μ l, 10 mg/ml, Boehringer Mannheim). The combined solution was incubated at 37°C for thirty minutes.

Gel electrophoresis was then conducted to analyze the collected material. A 1.2% agarose gel was prepared by melting 600 mg of agarose in 50 ml of 1 \times TBE buffer. Ethidium bromide (2.5 μ g) was added to the agarose solution before it became solidified.
25 Proteinase K treated lysate samples with or without RNase treatment were loaded onto the gel along with marker DNAs. Figure 7 shows a photographic image taken after agarose gel electrophoresis of the nucleic acids of Figure 6 demonstrating that a whole spectrum of nucleic acids ranging from genomic DNA, supercoiled plasmid DNA and RNAs were released from the cells after electronic lysis.

A DNA hybridization assay was then performed. An oligonucleotide capture probe
30 (39-mers) specific for the SpaO region of the plasmid DNA was incorporated with biotin at its 3' end. The capture probe was diluted in 50 mM L-histidine buffer to make a final concentration of 500 nM. The capture probe was immobilized on the test microlocations

containing streptavidin with the underlying electrodes 24 positively biased. Electric biasing was performed by maintaining the current on each electrode 24 at 200 nA for one minute. Afterwards, the remaining probe solution was removed and the chip 12 was washed with 50 mM L-histidine buffer. The immobilization of the probes for the controls (ATA5 and GAS probe) was accomplished using the same protocol described above.

To facilitate the hybridization of DNA, a fraction of the proteinase K treated lysate was diluted three and five times respectively in the L-histidine buffer. The diluted lysate samples were boiled in a 100°C water bath for ten minutes to fragment the DNA (the final size of DNA ranging between 300 bp to 1 Kb) and also to make the DNA single stranded.

To verify the presence of the control, the synthesized RCA5 oligonucleotide target (see, F. Becker, *et al.*, "Separation of Human Breast Cancer Cells From Blood By Differential Dielectric Affinity", *Proc. Natl. Acad. Sci. USA* 92:860-64 (1995)) specific for capture probe ATA5 was electronically hybridized to both the immobilized ATA5 probe and the adjacent nonspecific GAS probe in parallel by keeping the current at each electrode at 450 nA for three minutes. When the capture processes were finished fresh L-histidine buffer was loaded to replace the old and to perform the electronic stringency wash. Washing was performed by applying 150 DC pulses to one row at a time, 1 μ A per pad with 0.1 seconds on and 0.2 seconds off.

To conduct the sandwich assay, reporter probe hybridization was performed as follows. The chip 12 was soaked in 1 \times STE buffer containing sonicated, denatured calf thymus DNA (100 μ g/ml, Sigma, St. Louis, MO) at room temperature for five minutes. Afterwards, the buffer was drained and 15 μ l of mixed solution (500 mM reporter probe in 1 \times STE buffer containing above mentioned calf thymus DNA) was put on the chip 12 and kept at room temperature for five minutes. The chip 12 was then washed five times with 15 μ l of 1% SDS buffer made with 0.2 \times STE and soaked at room temperature in 5 ml of the same buffer for ten minutes. The chip was finally washed five times with 0.2 \times STE.

Figure 8A shows the hybridization control 37 for electronically-enhanced target capture of plasmid DNA released from *E. coli*, and Figure 8B shows the results after a sandwich assay in which a sample of plasmid DNA 38 from *E. coli* is electronically hybridized to additional probes. As Figure 8A shows, the immobilization chemistry of oligonucleotide probe worked as expected (i.e. the immobilized probe captured the oligonucleotide), and, as is shown in Figure 8B, thermally treated plasmid DNA 38 obtained from electronic lysis can be used directly for hybridization-based assays with high

reproducibility and without necessarily involving an enzymatic amplification process.

Then RNA hybridization was performed. The oligonucleotide capture probe 5'-XGAGTTGCAGACTCCAATCCGGACTACGACG CACTTTA-3' specific for 16S RNA was incorporated with biotin at its 3' end. The probe was diluted in 50 mM L-histidine buffer to make a final concentration of 500 nM. The capture probe was immobilized on the test microlocations containing streptavidin with the underlying electrodes positively biased. The biasing was performed by maintaining the current on each electrode at 200 nA for one minute. Afterwards, the remaining probe solution was removed and the chip washed with 50 mM L-histidine buffer. The immobilization of the probes for the controls (ATA5 and GAS probe) was accomplished using the same protocol described above.

To test the control, the synthesized RCA5 oligonucleotide target specific for capture probe ATA5 was electronically hybridized to both the immobilized ATA5 probe and the adjacent nonspecific GAS probe in parallel by keeping the current at each electrode at 450 nA for three minutes. The capture of the synthesized oligonucleotide target 5'-AATGGCGCATACAAAGAGAAGCGACCTCGCGAGAGCAAGCGGACCTCATAAA GTGCGTCGTAGTCCGGATTGGAGTATGCAACTCG-3' was performed as described above. To facilitate the hybridization of 16S RNA, a fraction of the proteinase K treated lysate was diluted three and five times respectively in the L-histidine buffer. The diluted lysate samples used above for plasmid DNA hybridization were also used here. When the capture processes were finished fresh Tris-phosphate buffer (20 mM Tris-base, 20 mM dibasic sodium phosphate, pH 9.0) was loaded to replace the L-histidine buffer to perform the electronic stringency wash. Simply performing electronic stringency washing in L-histidine buffer was insufficient in reducing non-specifically captured RNAs, but with the Tris-phosphate buffer the electronic stringency washing was very effective even with milder electric field conditions than those used with the L-histidine buffer. The washing was performed by applying 70 DC pulses to a row at a time, 750 nA per pad with 0.1 seconds on and 0.2 seconds off.

To conduct the sandwich assay the reporter probe hybridization was performed as follows. The chip was soaked in 1× STE buffer containing sonicated, denatured calf thymus DNA (100 µg/ml, Sigma, St. Louis, MO) at room temperature for five minutes. Afterwards, the buffer was drained and 15 µl of mixed solution (500 mM reporter probe in 1× STE buffer containing above mentioned calf thymus DNA) was put on the chip and kept at room temperature for five minutes. The chip was then washed five times with 15 µl of 1% SDS

buffer made with 0.2× STE and soaked at room temperature in 5 ml of the same buffer for ten minutes. The chip was finally washed five times with 0.2× STE.

Figure 9A shows a hybridization control 39a for electronically-enhanced target capture of ribosomal RNA released from *E. coli*, and Figure 9B shows the results after a sandwich assay in which ribosomal 16S RNA 39b from *E. coli* is electronically hybridized to additional probes. As Figure 9A shows, the immobilization chemistry of oligonucleotide probe worked as expected (i.e. the immobilized probe captured the oligonucleotide), and, as is shown in Figure 9B, thermally treated ribosomal RNAs 39b obtained from electronic lysis can be used directly for hybridization-based assays with high reproducibility and without necessarily involving an enzymatic amplification process.

The Cervical Carcinoma Test

As is mentioned above, the cartridge 10 was also used to separate and isolate cultured cervical carcinoma cells (HeLa cells) from peripheral blood cells in a mixture.

First a cell culture was prepared using well known techniques. The epithelial carcinoma cell line (HeLa) derived from a human cervical tumor was prepared by the core cell culture facility at the University of California at San Diego. The growth media (250 ml) was prepared by adding L-glutamine (2.5 ml, BRL Life Technologies) and fetal bovine serum (25 ml, Gemini Bio-Products) to RPMI 1640 (222.5 ml, BRL Life Technologies). To test the media for sterility, a portion of it (3 ml) was removed to a conical tube (15 ml) and the tube placed, with a loosened cap, in a 5% CO₂ incubator (National) at 37°C for one week. The tube was checked for contamination every day for one week. Next, a frozen vial of cells (1.0 ml) was rapidly thawed by agitating in a 37°C water bath. An equal volume of prewarmed media was then immediately added to the cells and the mixture transferred to a conical tube (15 ml). An additional portion of media (6 ml) was added to the cells to make a final volume of 8 ml. The cells were pelleted by centrifugation at 1100 rpm for two minutes. The supernatant was removed and the cell pellet resuspended in fresh media (10 ml). The cell suspension was incubated at 37°C in the presence of 5% CO₂. The cells were harvested by trypsinizing the cells and then resuspending them in fresh media for immediate use. The cell count was 1×10⁶/ml.

Then a cell mixture was prepared using well known techniques. The cell separation buffer comprised 0.0025× TBE (225 nM Tris, 225 nM boric acid, 5 nM EDTA, pH 8.2), 250 mM sucrose. The conductivity of the buffer was 10 μS/cm measured by an Accumet pH

Meter 50 (Fisher Scientific, Pittsburgh, PA). The buffer conductivity for cell separation was chosen carefully to ensure that the HeLa cells will be subjected to positive dielectrophoresis and all normal blood cells negative dielectrophoresis. The cultured HeLa cell suspension (1 ml) was centrifuged at 325× g for four minutes and the supernatant removed. The cell pellet
5 was washed in the cell separation buffer (1 ml) and pelleted using the same conditions described above. The HeLa cells were then resuspended in the cell separation buffer (1 ml). Fresh EDTA-anticoagulated human blood (1 ml) was spun at 400× g for five minutes and the supernatant removed. The packed cells (5 μl) were removed and added to the HeLa cell suspension (1 ml).

10 The dielectrophoresis system used in this test is as described above except that it also included a laser to aid in detection. The cartridge 10 was placed on an analytical probe station (Model 6000 Micromanipulator, Carson City, NV). Laser excitation was delivered by two He-Ne 594-nm lasers through optic fibers (6 mW output power; Research Electro-Optics, Boulder, CO) from an oblique angle. Image signals were collected by a cooled color
15 charge-coupled device (CCD) camera (DEI-750T, Optronics International, Chelmsford, MA) through a 8× objective (numerical aperture 0.15) and a 630 ± 25 nm band-pass filter. Image acquisition was achieved by means of a frame grabber (Scion, Frederick, MD) and the IPLab 3.1.1 software on a Macintosh compatible StarMax 3000/200. Fluid pumping was accomplished with a peristaltic pump (Model RP-1, Rainin Instruments, Woburn, MA).
20 Electrode signals were generated from a function/arbitrary waveform generator (Model HP33120A, Hewlett-Packard, Santa Clara, CA) and monitored by an oscilloscope (Model HP54600, Hewlett-Packard).

The HeLa cells were dielectrophoretically separated from the blood cells. The chip
25 12 was first washed by pumping separation buffer through the flow chamber (this also helped to wet the chip permeation layer and to remove any air bubbles in the chamber). Figure 10A shows the surface of the chip 12 after washing. Next, the cell mixture was pumped into the flow chamber, and the pump was switched off. The entire array of electrodes 24 was addressed in a checkerboard format, described above, by applying a sinusoidal signal of 6 volts peak-to-peak at 30 KHz. As shown in Figure 10B, the separation
30 of HeLa cells 31 (collected at the electrodes 24 at the field maxima) from the peripheral human blood cells 32 (collected between the electrodes at the field minima 25) was complete in approximately three minutes. When the cell sample was nearly drained from the sample/buffer reservoir, separation buffer was pumped through the flow cell to wash the rest of

the sample through while the AC signal was still on thereby allowing any additional HeLa cells carried into the flow chamber to be attracted to and retained by the electrodes 24, and to wash the peripheral human blood cells collected between the electrodes to be washed away. Figure 10C shows the chip surface after this washing step.

5 To confirm that the cells on the electrodes were HeLa cells and not peripheral lymphocytes, buffy coat cells were prepared from the same blood, diluted with the same separation buffer and subjected to the same dielectrophoresis conditions. In this experiment, the lymphocytes were seen to move into the field minima between the electrodes and away from the electrodes confirming that the HeLa cells were on the electrodes.

10 The isolated HeLa cells were then stained through fluorescent staining as follows. The nucleic acid-binding fluorescent-dye, propidium iodide (2 μ l, 1 mg/ml; Molecular Probes, Eugene, OR) was added to the separation buffer (100 μ l). When the cell isolation process was finished, the staining buffer was pumped into the flow cell. The staining process took about sixty seconds before the fluorescent image, which is shown in Figure
15 10D, was captured. The resulting image enabled estimation of the diameter of the individual cells by comparing the size of the cells to the diameter of an electrode which is known to be 80 μ m. The estimated size of the isolated cells on the electrodes varies from 17 to 34 μ m which agrees with estimates obtained from viewing HeLa cells under an inverted microscope. In addition, the shape of these cells was more defined compared to lymphocytes
20 which also confirms that they are HeLa cells. The isolated HeLa cells can be lysed and, if desired, subject to enzymatic reaction(s) as described above.

No convective movement of cells was observed during the dielectrophoretic separation process described above. As is mentioned above, this helps to minimize disturbing and washing off cells initially retained by the electrodes.

25

Additional Designs

Figures 11A and 11B show cut-away schematic views of a design of a self-contained cartridge 10 for performing cell separation, cell lysis, enzymatic deproteinization process of DNA/RNA, and/or DNA or RNA hybridization. The cartridge 10 includes a U-shaped flow cell chamber 16 over a microchip 12. The microchip 12 includes an array of twenty five
30 electrodes 24a and four counterelectrodes 34a in one arm 40a of the U-shaped chamber and an array of nine electrodes 24b in the other arm 40b of the U-shaped chamber. It should be noted that the number of electrodes used in the electrode arrays can differ from that shown

here, and that the present specification shows an exemplary number of electrodes but is not limited to the same. Tubing 18a, 18b, and 18c is attached to the flow chamber 16 at vias 42a, 42b, and 42c which provide fluid communication into and out of the flow chamber 16.

One benefit of a U-shaped flow chamber such as that shown in Figures 11A and 11B is that different processes may be performed in essentially different chambers without having to physically remove and/or reintroduce the sample. For example, as is shown in Figure 11A, tubing 18c is closed, and a sample is introduced through tubing 18a. Isolation and lysis of the desired cells takes place on electrodes 24a as is described above. Then, as is shown in Figure 11B, tubing 18a is closed and tubing 18c is opened. The desired portion of the lysate is moved from arm 40a of the U-shaped chamber to arm 40b by manipulating flow through the flow cell and the electrical charge of the various electrodes in the cell 16. Then, for example, at electrodes 24b, the lysate is subject to hybridization or some other enzymatic reaction. This compartmentalization approach has the added benefit of avoiding interference from unwanted fragments in the lysate which did not fully wash away.

Figures 12A-D are schematic views of four different microchip designs which can be incorporated into the present invention. Figure 12A shows a chip design for investigating optimal electrode dimensions for both dielectrophoresis and electronic lysis. It is believed that by using newly designed chips with a more expansive area covered by the microelectrodes, higher yield of desired cells can be achieved in less time.

Figure 12B shows a chip design that combines dielectrophoresis and travelling wave pumping features described above. The chip design shown in Figure 12B provides a circular movement of the cell suspension introduced by applying a travelling wave (using a full face power supply) during the dielectrophoretic separation of cells (using the central microelectrode array).

Figures 12C and 12D show chip designs for evaluating the use of travelling wave for separating and transporting cells.

While certain embodiments of the present invention have been shown and described in detail, it will be readily apparent to those skilled in the art, in light of these teachings, that certain changes and modifications may be made thereto without departing from the spirit or scope of the appended claims.

What Is Claimed Is:

1. An apparatus for at least one of separating, lysing, and enzymatically reacting biological samples, said apparatus comprising:
5 an approximately U-shaped channel-less flow chamber for accepting a biological sample, and
a bioelectronic chip comprising a plurality of electrodes, wherein the electrodes are disposed in the flow chamber and are each capable of being biased, and wherein the chip and electrode surfaces in the flow chamber are coated with a permeation layer to prevent direct
10 contact between said biological sample and said surfaces.
2. The apparatus of claim 1 wherein the plurality of electrodes comprises at least one array.
- 15 3. The apparatus of claim 2 wherein the plurality of electrodes comprises two arrays.
4. The apparatus of claim 1 wherein the flow chamber comprises a covered flow cell attached to the bioelectronic chip.
20
5. The apparatus of claim 1 wherein the permeation layer enables immobilization of a capture probe thereon.
6. The apparatus of claim 1 wherein the flow chamber has an approximate
25 volume of about 10 microliters.
7. The apparatus of claim 1 wherein the electrodes are addressable in a checkerboard biasing format.
- 30 8. The apparatus of claim 1 wherein each electrode is addressable to enable biasing each electrode opposite from nearest neighboring electrodes.
9. The apparatus of claim 1 wherein the plurality of electrodes comprises groups

of electrodes, and wherein each group is addressable to enable biasing each group of electrodes opposite from nearest neighboring groups of electrodes.

10 10. The apparatus of claim 1 further comprising at least one pair of
5 counterelectrodes to enable electronic lysis through a series of electronic pulses between the
electrodes and said counterelectrodes.

11. The apparatus of claim 10 comprising two pair of counterelectrodes.

10 12. The apparatus of claim 1 further comprising an immobilized capture probe on
the permeation layer at the electrode surfaces in the flow chamber.

13. The apparatus of claim 13 wherein the capture probe comprises at least one of
an antibody and ligand.

15

14. An apparatus for at least one of separating, lysing, and enzymatically reacting
a biological sample, said apparatus comprising:

a U-shaped channel-less flow chamber for accepting a biological sample,

20 a bioelectronic chip comprising a plurality of electrodes, wherein the electrodes are
disposed in the flow chamber and are each capable of being biased, and

wherein the U-shaped flow chamber comprises a first arm and a second arm, and the
plurality of electrodes comprise at least two electrode arrays, and wherein one electrode array
is disposed in the first arm and one electrode array is disposed in the second arm.

25 15. The apparatus of claim 14 wherein the electrodes are addressable in a
checkerboard biasing format.

16. The apparatus of claim 14 further comprising two pairs of counterelectrodes
to enable electronic lysis through a series of electronic pulses between the electrodes and said
30 counterelectrodes.

17. The apparatus of claim 14 wherein the flow chamber comprises a covered
flow cell attached to the bioelectronic chip.

18. The apparatus of claim 17 wherein the chip and electrode surfaces in the flow chamber are coated with a permeation layer which enables immobilization of a capture probe thereon.
- 5
19. The apparatus of claim 18 wherein the capture probe comprises at least one of an antibody and ligand.
20. A method of manipulating biological samples comprising a mixture of
10 desired cellular materials and undesired cellular materials, the manipulation being achieved in a dielectrophoretic system including a flow chamber having an array of electrodes, comprising the steps of:
- introducing a cell mixture suspension into the flow chamber of the system;
 - subjecting the cell mixture suspension to an electric field by biasing the electrodes in
15 a checkerboard format such that desired cells collect at the electrodes and undesired cells collect between the electrodes; and
 - washing the undesired cells out of the flow chamber.
21. The method of claim 20 comprising the additional step of lysing the desired
20 cells retained in the flow chamber of the system by subjecting the cells to a series of electronic pulses having alternating polarity.
22. The method of claim 21 comprising the additional step of subjecting the
25 lysed material in the flow chamber of the system to an enzymatic reaction.
23. A method of manipulating biological samples comprising a mixture of
desired cellular materials and undesired cellular materials, the manipulation being achieved in a dielectrophoretic system including a flow chamber having a first array of electrodes for separating and lysing, and a second array of electrodes which include oligonucleotide capture
30 probes for hybridizing, comprising the steps of:
- introducing a cell mixture suspension into the flow chamber of the system;
 - subjecting the cell mixture suspension to an electric field by biasing the first array of electrodes in a checkerboard format such that desired cells collect at the electrodes and

- undesired cells collect between the electrodes;
washing the undesired cells out of the flow chamber;
lysing the desired cells retained in the flow chamber of the system by subjecting the cells to a series of electronic pulses having alternating polarity;
- 5 subjecting the lysed material in the flow chamber of the system to an enzymatic reaction; and
hybridizing the enzymatic reaction product by exposure to the second array of electrodes.
- 10 24. A method of manipulating biological samples comprising a mixture of desired cellular materials and undesired cellular materials, the manipulation being achieved in a dielectrophoretic system including a flow chamber having a first array of electrodes for separating and lysing, and a second array of electrodes which include oligonucleotide capture probes for hybridizing, comprising the steps of:
- 15 introducing a cell mixture suspension into the flow chamber of the system;
subjecting the cell mixture suspension to an electric field by biasing the first array of electrodes in a checkerboard format such that desired cells collect at the electrodes and undesired cells collect between the electrodes;
washing the undesired cells out of the flow chamber;
- 20 lysing the desired cells retained in the flow chamber of the system by subjecting the cells to a series of electronic pulses having alternating polarity;
subjecting the lysed material in the flow chamber of the system to an enzymatic reaction; and
exposing the enzymatic reaction product to the second array of electrodes for ligand
- 25 binding.
25. The method of claim 24 wherein the ligand binders are immobilized antibodies.

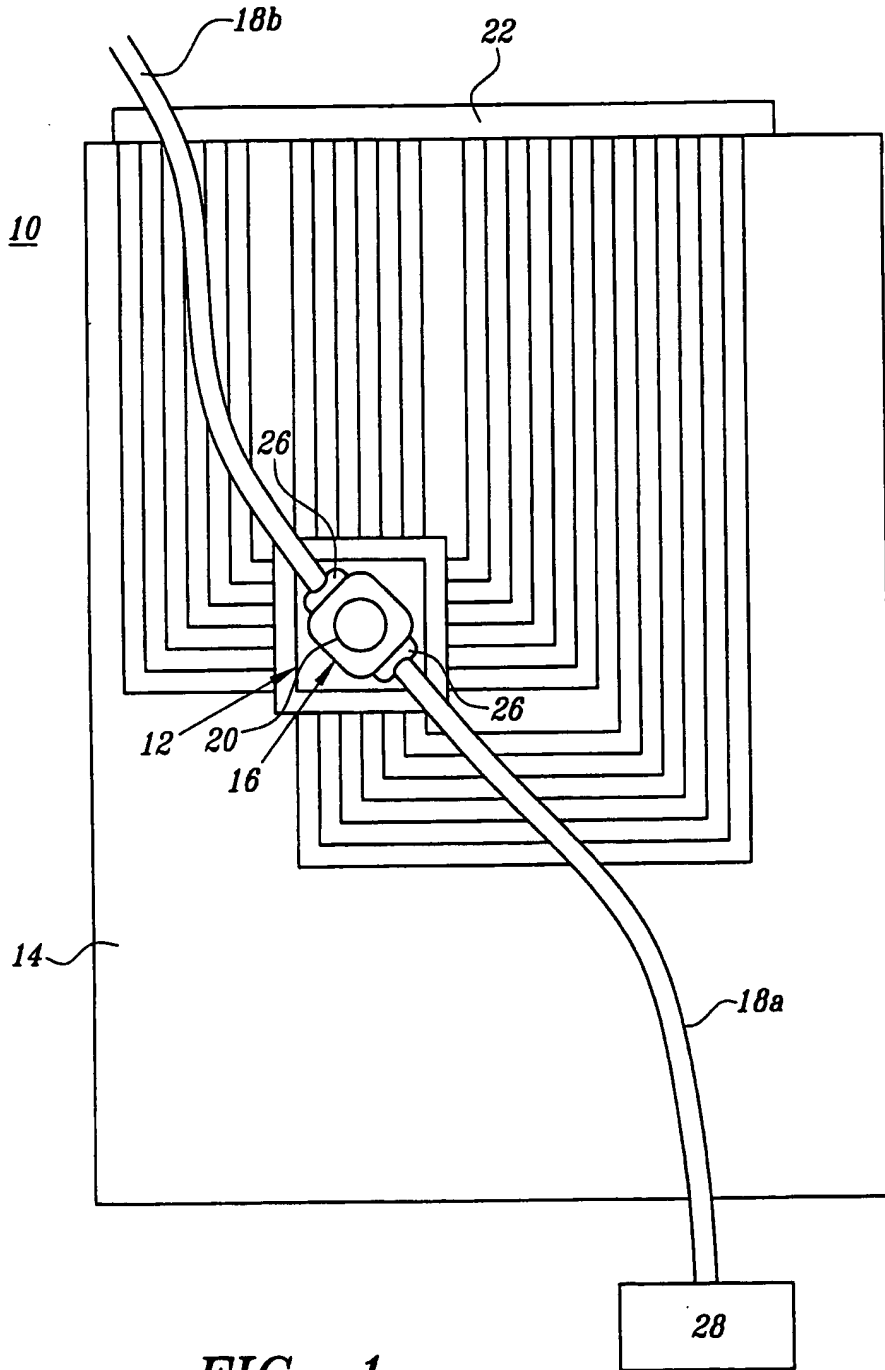


FIG. 1

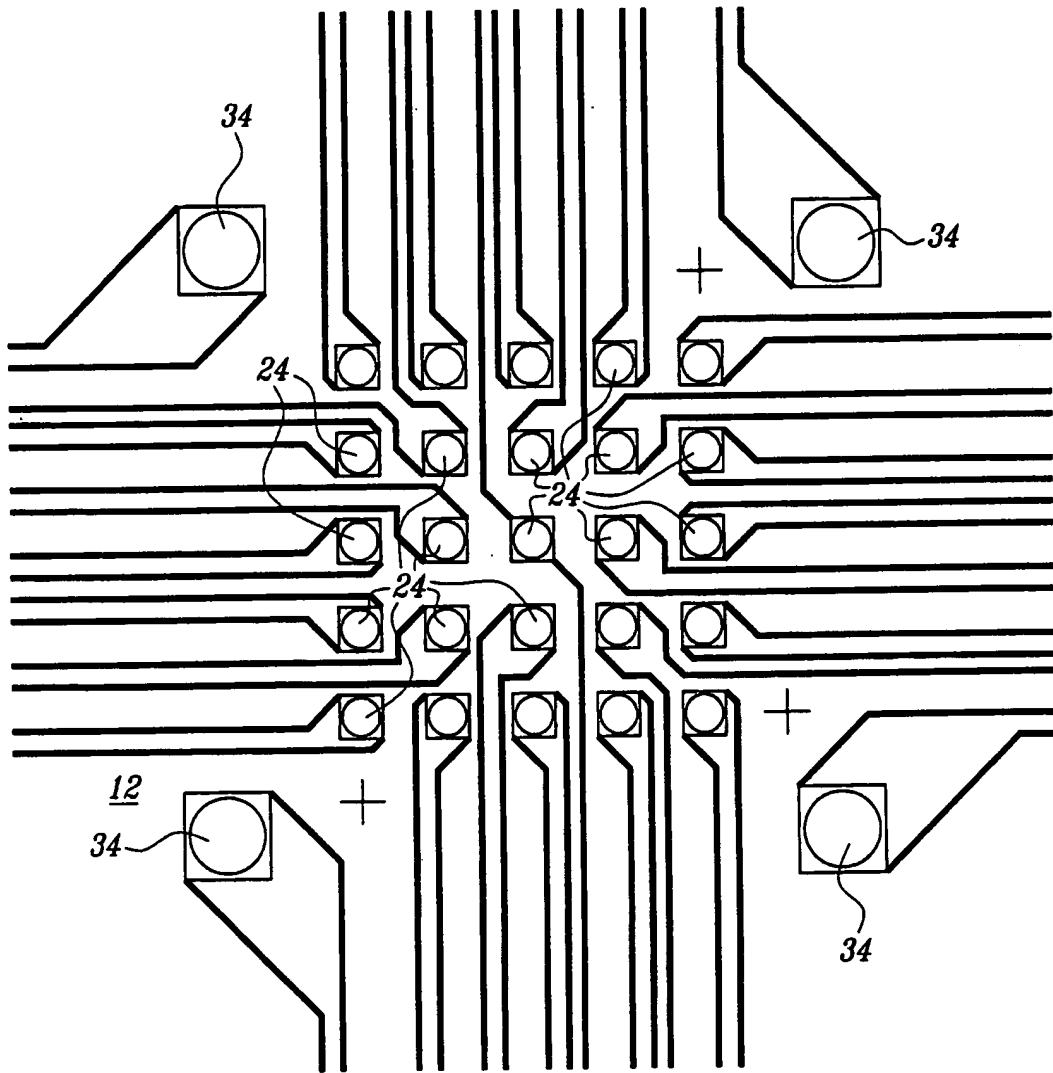


FIG. 2

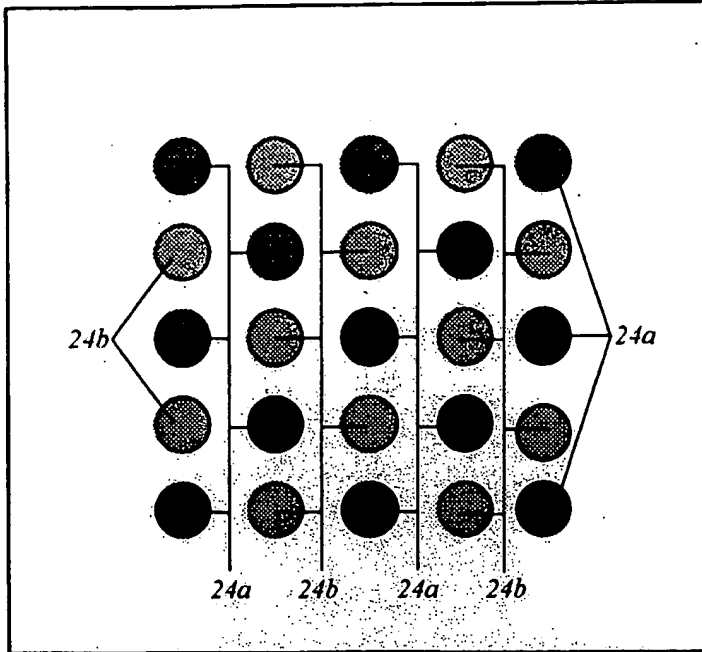


FIG. 3A

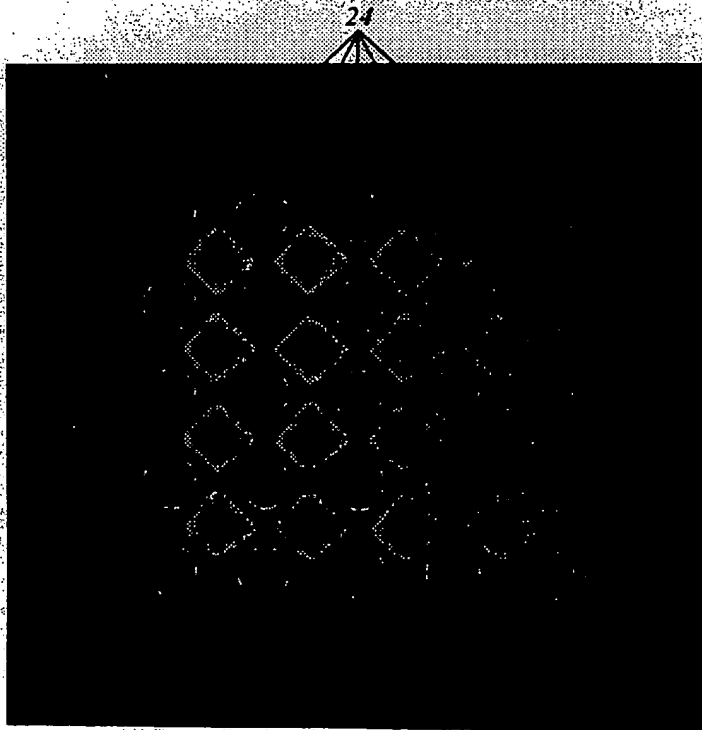


FIG. 3B

4/15

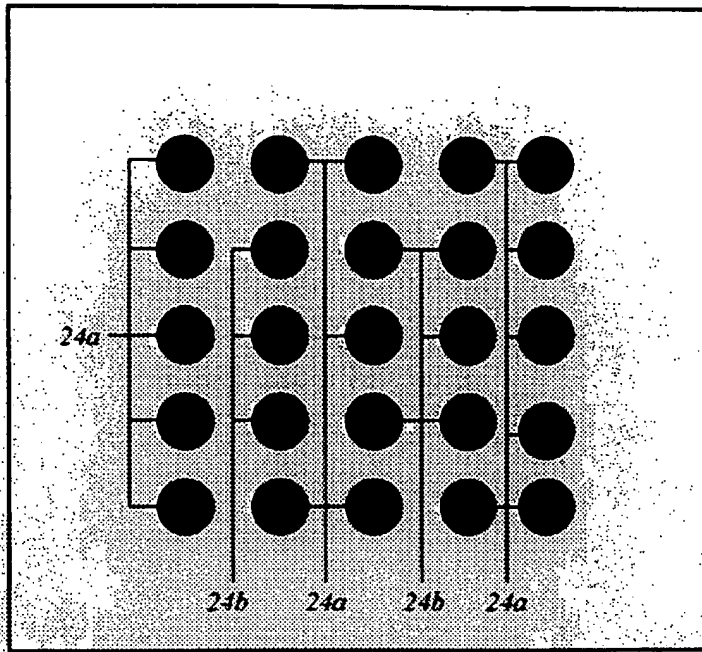
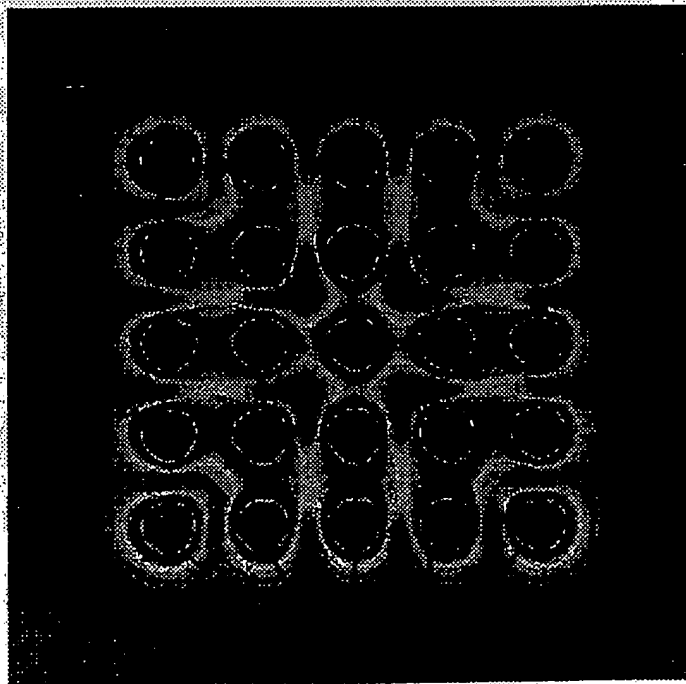


FIG. 3C



24

FIG. 3D

SUBSTITUTE SHEET (RULE 26)

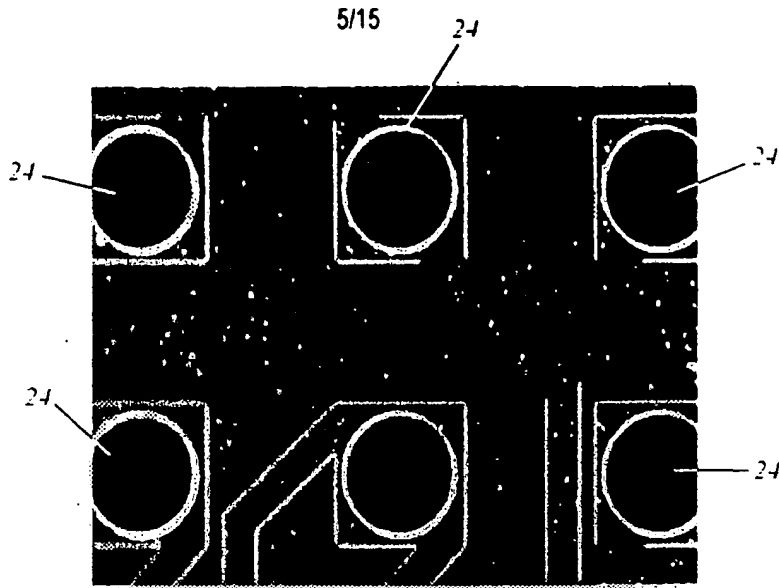


FIG. 4A

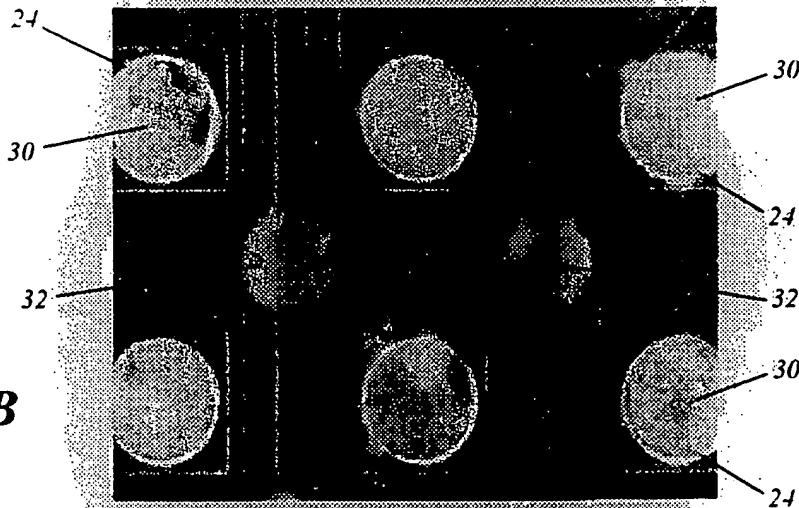


FIG. 4B

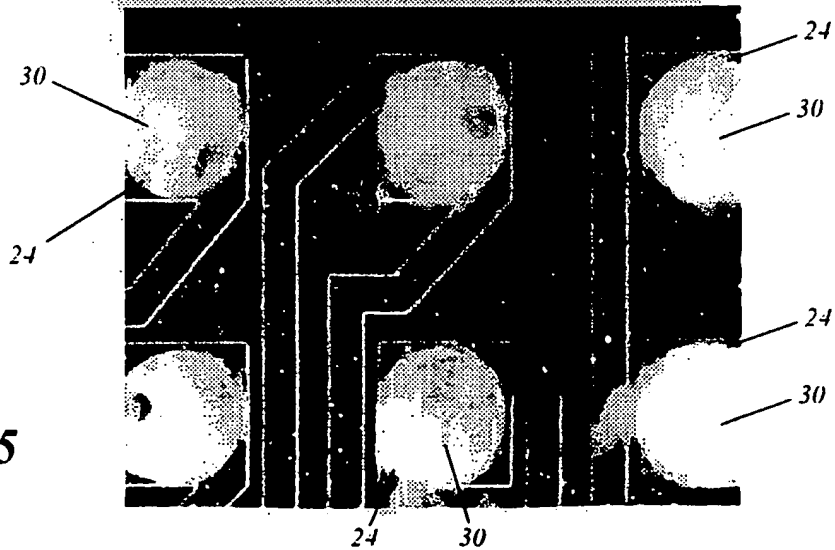


FIG. 5



FIG. 6

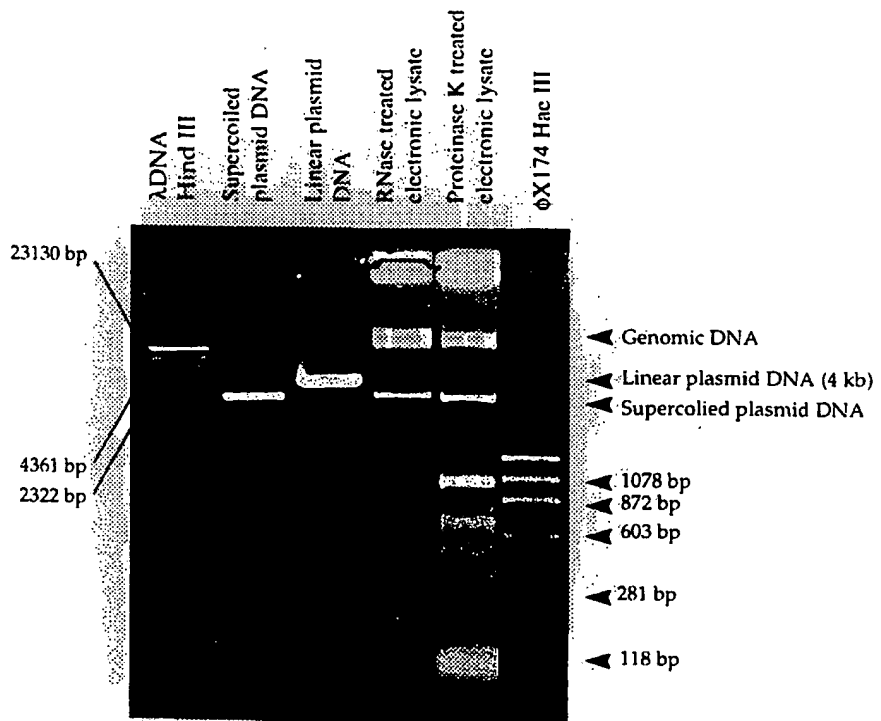


FIG. 7

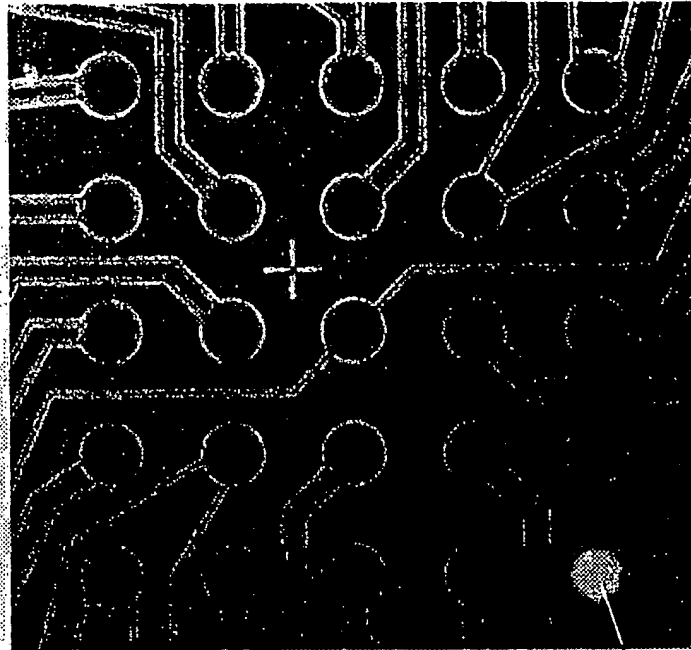


FIG. 8A

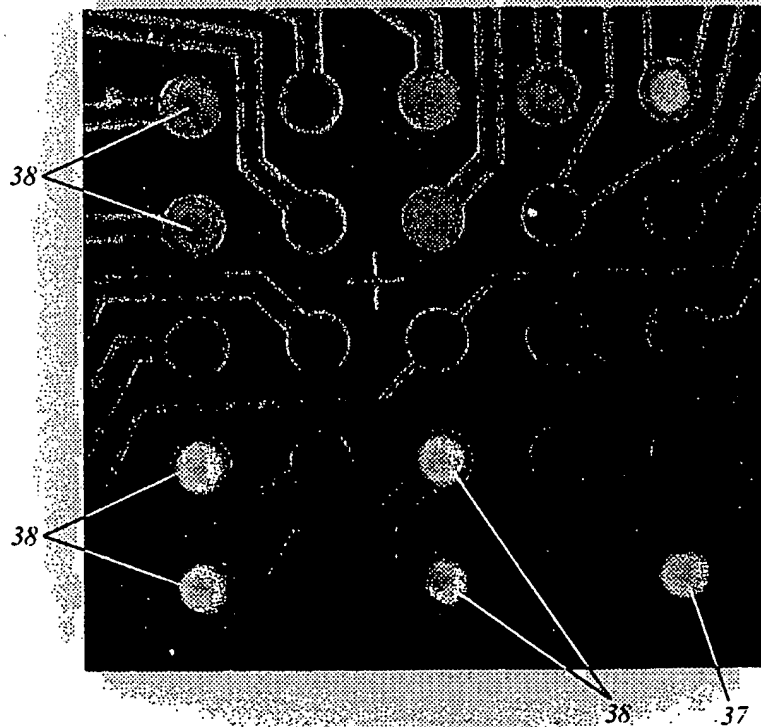


FIG. 8B

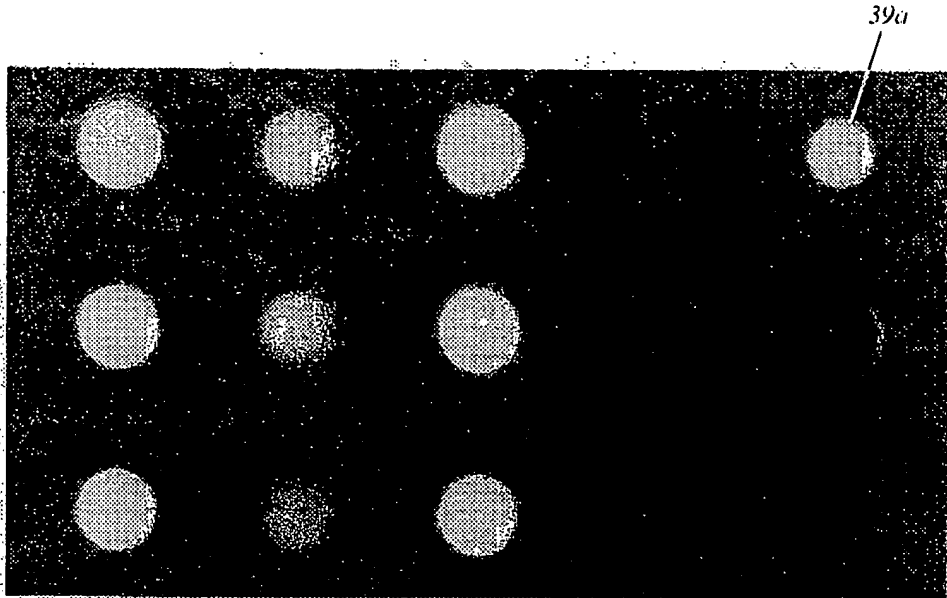


FIG. 9A

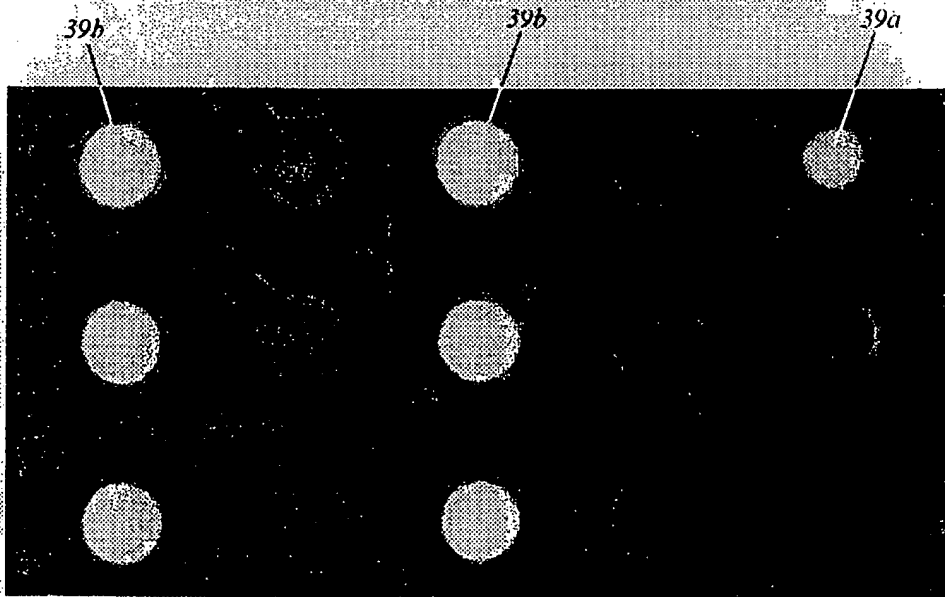


FIG. 9B

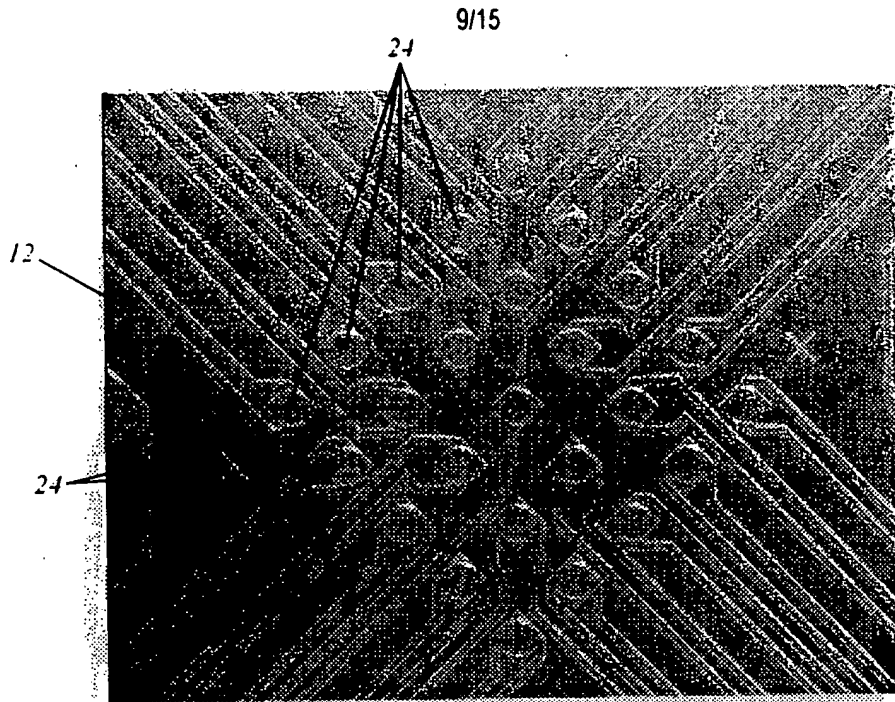


FIG. 10A

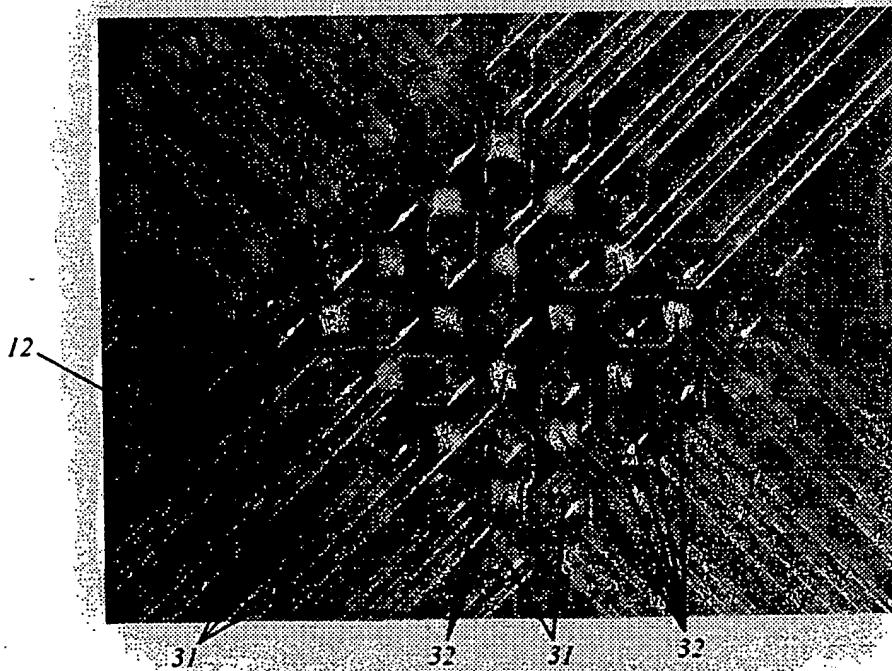


FIG. 10B

10/15

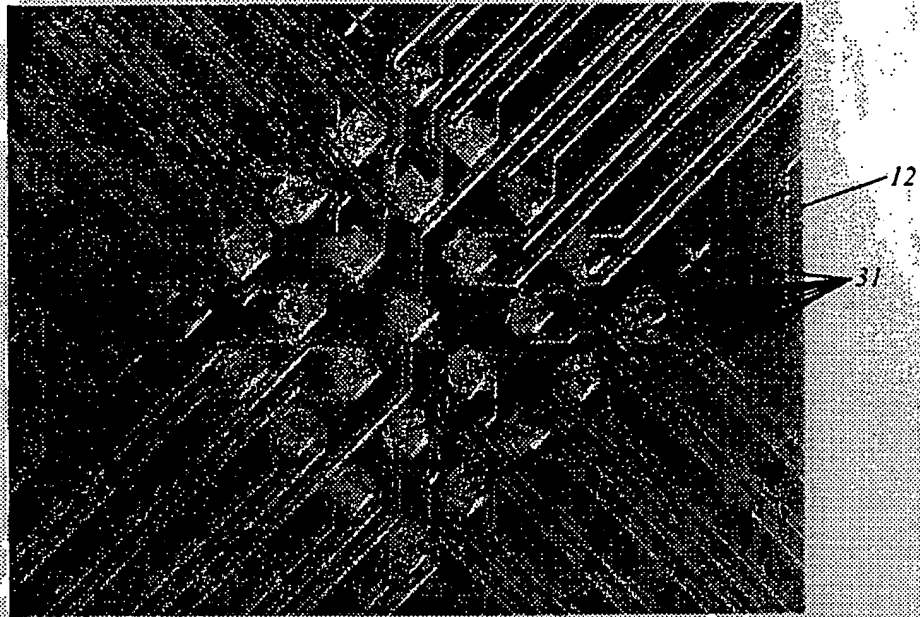


FIG. 10C

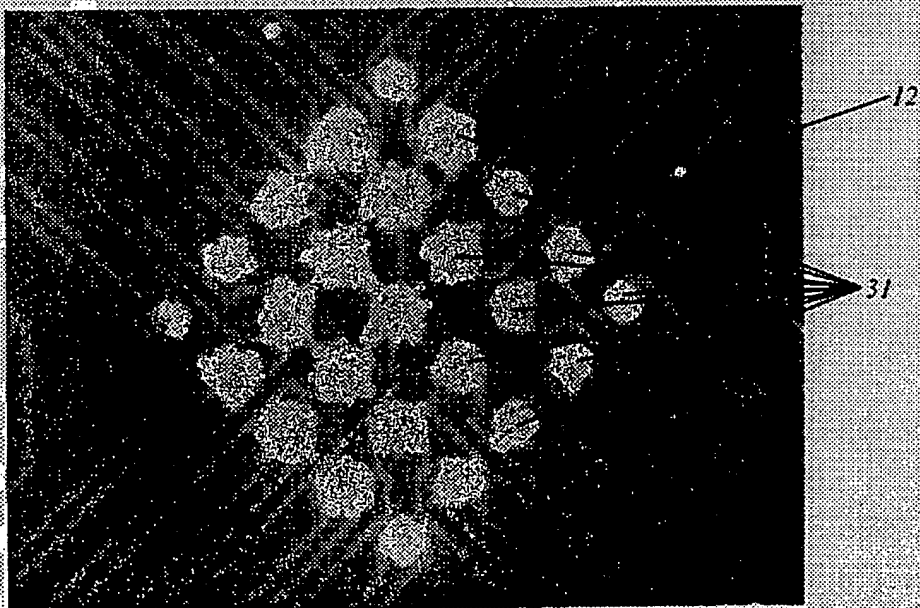


FIG. 10D

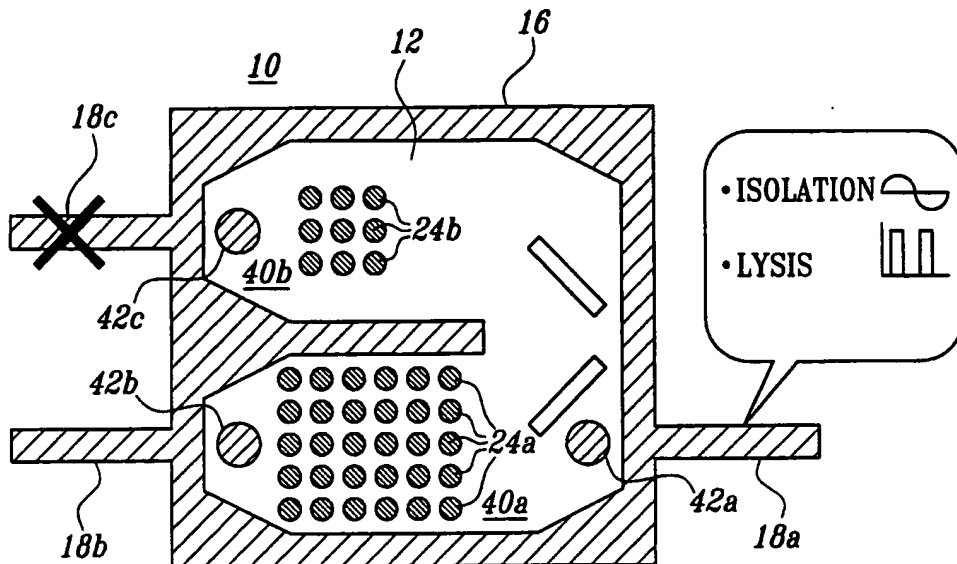


FIG. 11A

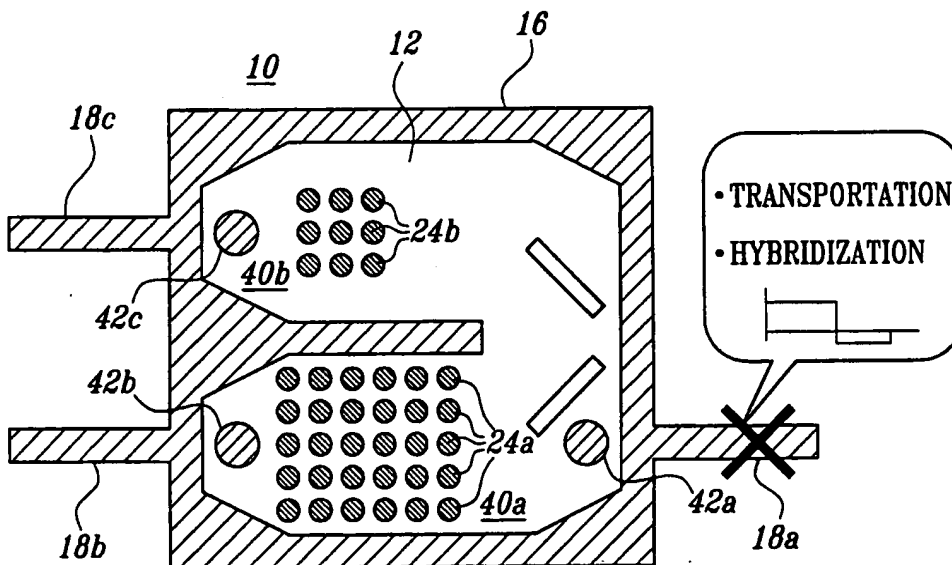


FIG. 11B

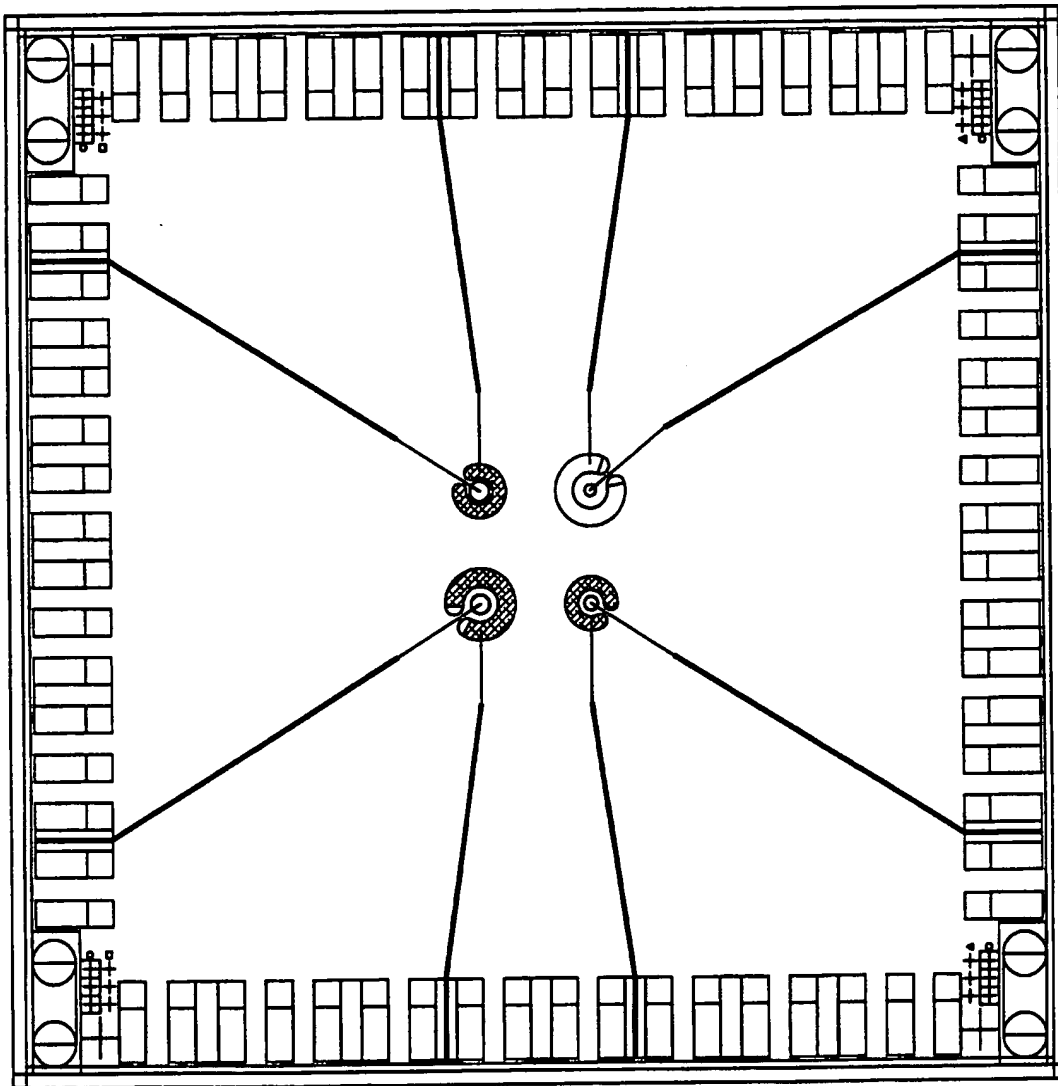


FIG. 12A

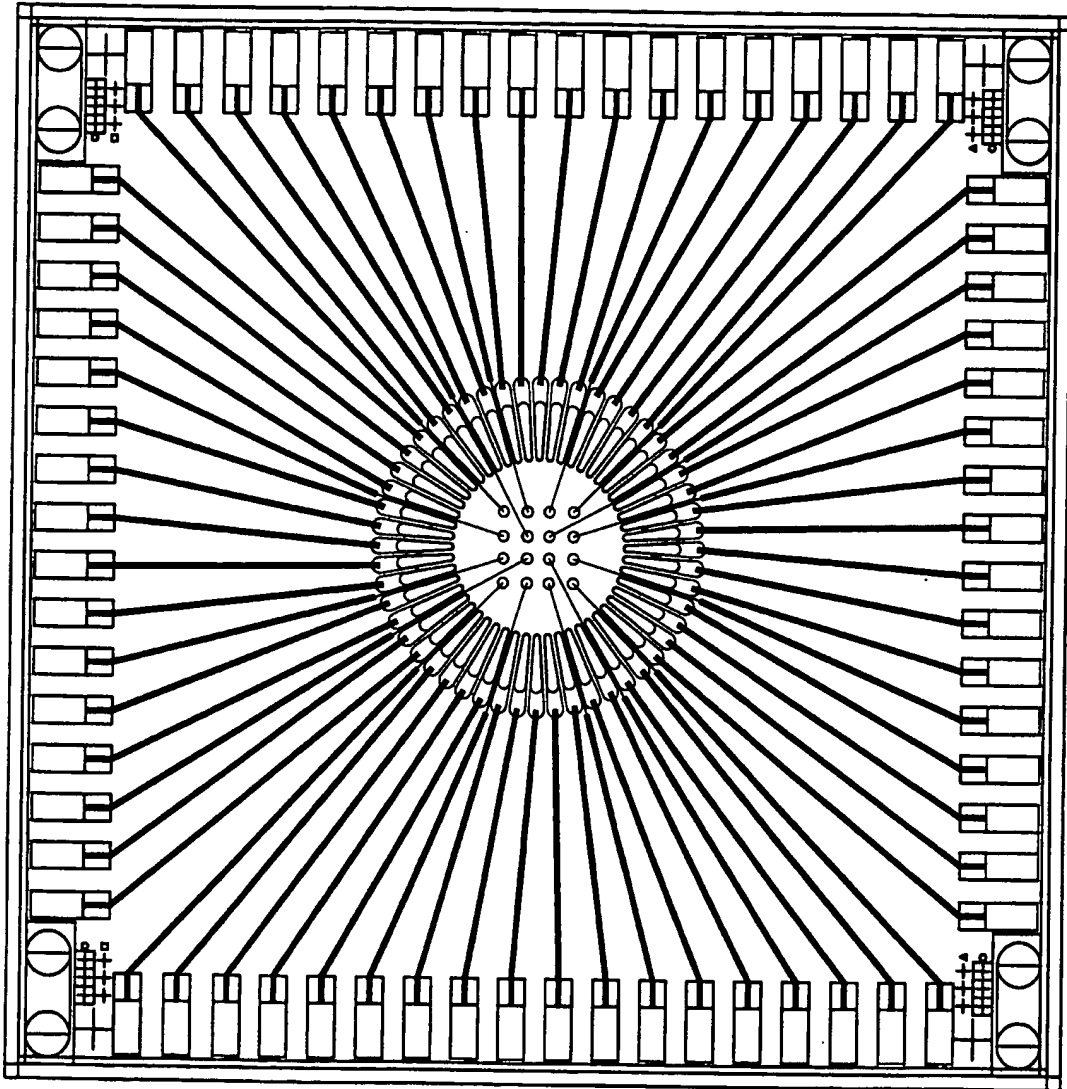


FIG. 12B

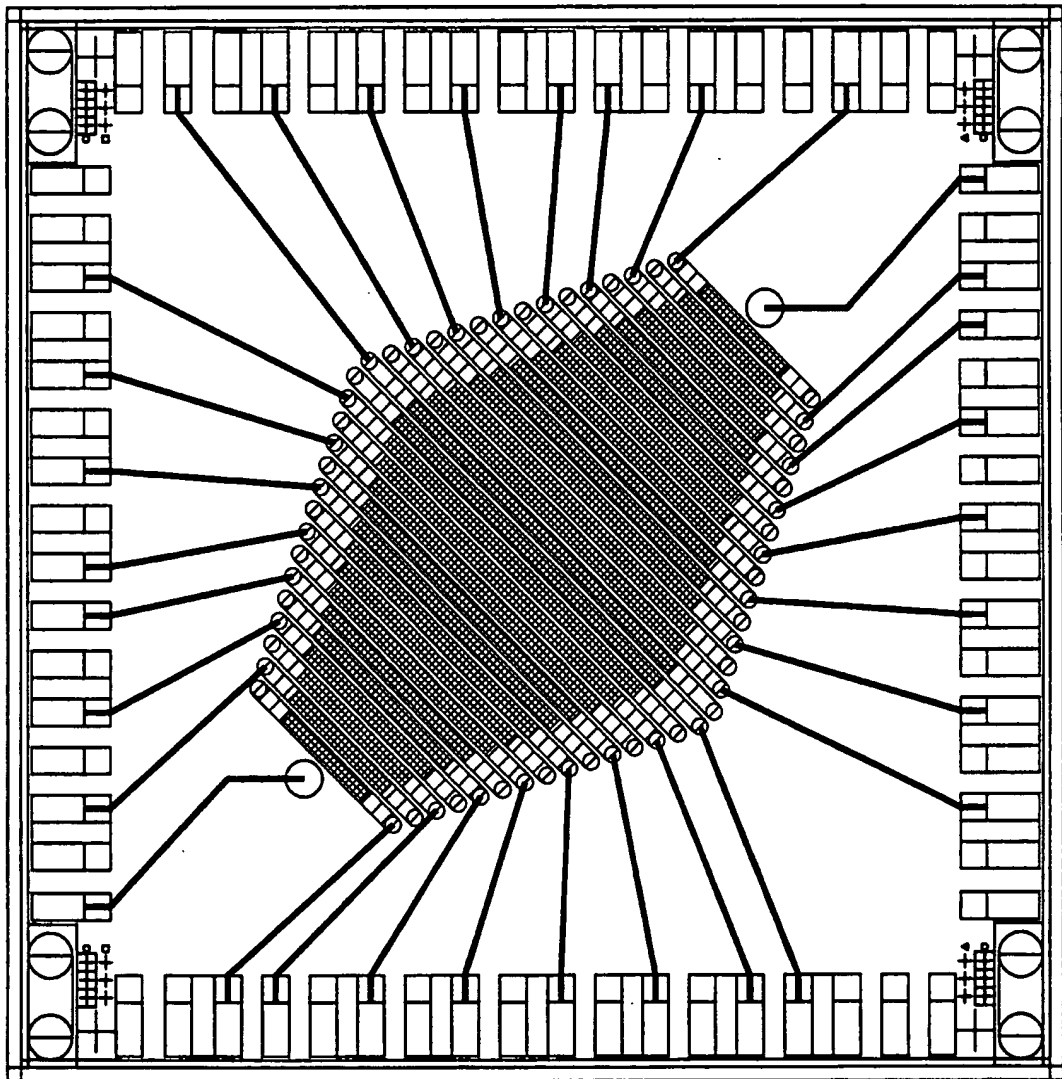


FIG. 12C

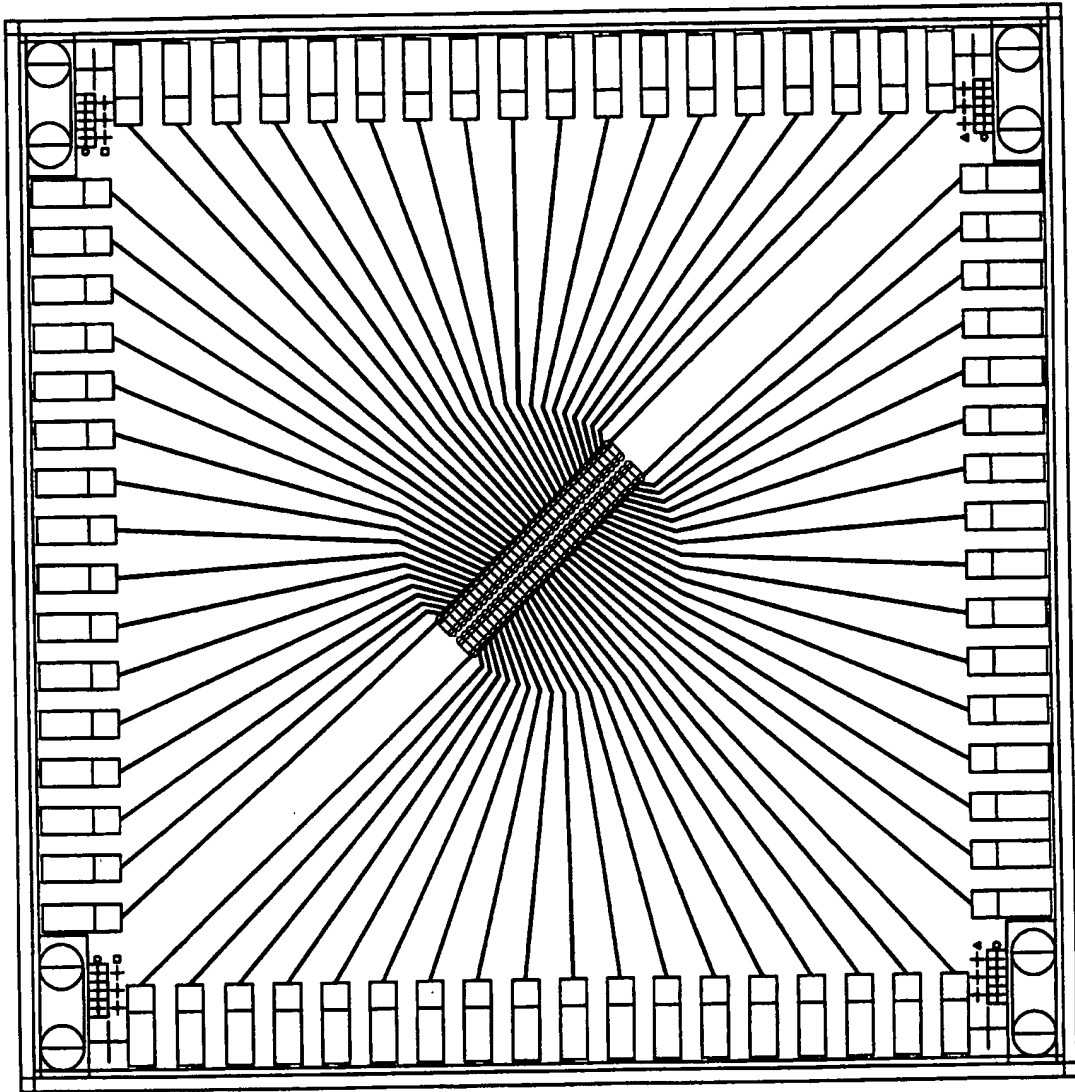


FIG. 12D

INTERNATIONAL SEARCH REPORT

Inter. Application No

PCT/US 99/01651

A. CLASSIFICATION OF SUBJECT MATTER
 IPC 6 B01J19/00 B01L3/00 B03C5/02 G01N33/53 C12Q1/68
 C12N13/00

According to International Patent Classification (IPC) or to both national classification and IPC

B. FIELDS SEARCHED
 Minimum documentation searched (classification system followed by classification symbols)
 IPC 6 B03C G01N C12Q C12N

Documentation searched other than minimum documentation to the extent that such documents are included in the fields searched

Electronic data base consulted during the international search (name of data base and, where practical, search terms used)

C. DOCUMENTS CONSIDERED TO BE RELEVANT

Category *	Citation of document, with indication, where appropriate, of the relevant passages	Relevant to claim No.
X	FUHR G ET AL: "POSITIONING AND MANIPULATION OF CELLS AND MICROPARTICLES USING MINIATURIZED ELECTRIC FIELD TRAPS AND TRAVELLING WAVES" SENSORS AND MATERIALS, vol. 7, no. 2, 1995, pages 131-146, XP000617993	1-4, 7-9
A	see page 132, paragraph 4 - page 133, paragraph 2 see page 134, paragraph 1 see page 135, paragraph 2 see page 145; figure 7D ---	20, 21
X	DE 44 00 955 A (FRAUNHOFER GES FORSCHUNG) 29 June 1995 see column 4, line 60 - column 5, line 11; claims 1,5,11,13,14,17; figures 3,4 ---	1-3, 5, 7-9
	-/--	

Further documents are listed in the continuation of box C.

Patent family members are listed in annex.

* Special categories of cited documents :

- "A" document defining the general state of the art which is not considered to be of particular relevance
- "E" earlier document but published on or after the international filing date
- "L" document which may throw doubts on priority claim(s) or which is cited to establish the publication date of another citation or other special reason (as specified)
- "O" document referring to an oral disclosure, use, exhibition or other means
- "P" document published prior to the international filing date but later than the priority date claimed

- "T" later document published after the international filing date or priority date and not in conflict with the application but cited to understand the principle or theory underlying the invention
- "X" document of particular relevance; the claimed invention cannot be considered novel or cannot be considered to involve an inventive step when the document is taken alone
- "Y" document of particular relevance; the claimed invention cannot be considered to involve an inventive step when the document is combined with one or more other such documents, such combination being obvious to a person skilled in the art.
- "&" document member of the same patent family

Date of the actual completion of the international search

22 April 1999

Date of mailing of the international search report

29/04/1999

Name and mailing address of the ISA
 European Patent Office, P.B. 5818 Patentlaan 2
 NL - 2280 HV Rijswijk
 Tel. (+31-70) 340-2040, Tx. 31 651 epo nl,
 Fax: (+31-70) 340-3018

Authorized officer

Decantere, L

INTERNATIONAL SEARCH REPORT

International Application No

PCT/US 99/01651

C.(Continuation) DOCUMENTS CONSIDERED TO BE RELEVANT		
Category	Citation of document, with indication, where appropriate, of the relevant passages	Relevant to claim No.
A	<p>WO 93 05166 A (FUCCELL PTY LTD) 18 March 1993</p> <p>see page 5, line 10 - page 8, line 32; claims 1,2,5,6,9,10,12-15,17 see page 19, line 33 - page 20, line 4</p> <p>---</p>	<p>1,5,10, 12,13, 20,21, 24,25</p>
A	<p>US 4 441 972 A (POHL HERBERT A) 10 April 1984 see claims 1,2</p> <p>---</p>	<p>1,20,21</p>
A	<p>WO 96 07917 A (NANOGEN) 14 March 1996</p> <p>see page 8, line 31 - page 10, line 3 see page 13, line 32 - page 17, line 15 see page 18, line 14 - page 19, line 22; claims 1,6,14,17; figures 2,6</p> <p>-----</p>	<p>1-3,5, 7-9,12, 20-25</p>

INTERNATIONAL SEARCH REPORT

Information on patent family members

International Application No

PCT/US 99/01651

Patent document cited in search report	A	Publication date	Patent family member(s)	Publication date
DE 4400955	A	29-06-1995	WO 9517258 A EP 0735923 A JP 9511434 T	29-06-1995 09-10-1996 18-11-1997
WO 9305166	A	18-03-1993	AU 661037 B AU 2562092 A BR 9206463 A EP 0607178 A JP 6510193 T MX 9205086 A NZ 244216 A US 5589047 A	13-07-1995 05-04-1993 12-12-1995 27-07-1994 17-11-1994 01-05-1993 27-06-1994 31-12-1996
US 4441972	A	10-04-1984	US 4476004 A	09-10-1984
WO 9607917	A	14-03-1996	US 5632957 A AU 702773 B AU 3507095 A BR 9508908 A CN 1164894 A EP 0871888 A FI 970957 A JP 10505497 T US 5849486 A	27-05-1997 04-03-1999 27-03-1996 28-10-1997 12-11-1997 21-10-1998 07-05-1997 02-06-1998 15-12-1998